

(LIFRR1.LIFRR) 22139

AL-5942 (FAA)

FORT LAUDERDALE EXEC (F^XE)

FORT LAUDERDALE, FLORIDA

LIFRR ONE DEPARTURE (RNAV)

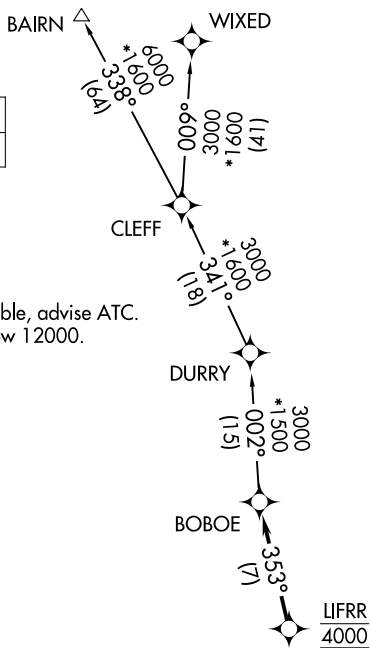
**TOP ALTITUDE:
ASSIGNED BY ATC**

RNAV 1 - DME/DME/IRU or GPS.

RADAR required.

ATIS 119.85
 CLNC DEL 127.95
 GND CON 121.75
 EXECUTIVE TOWER 120.9 239.3
 MIAMI DEP CON 126.05 251.1

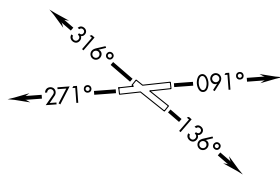
NOTE: Jet aircraft only.
 NOTE: Accelerate to 250K, if unable, advise ATC.
 NOTE: For aircraft filed at or below 12000.



TAKEOFF MINIMUMS

Rwys 9, 13, 31: Standard.

Rwy 27: Standard with minimum climb of 500' per NM to 520.



NOTE: Chart not to scale.



DEPARTURE ROUTE DESCRIPTION

TAKEOFF RUNWAY 9: Climb on heading 091° or as assigned by ATC for vectors to cross LIFRR at 4000, thence. . .

TAKEOFF RUNWAY 13: Climb on heading 136° or as assigned by ATC for vectors to cross LIFRR at 4000, thence. . .

TAKEOFF RUNWAY 27: Climb on heading 271° or as assigned by ATC for vectors to cross LIFRR at 4000, thence. . .

TAKEOFF RUNWAY 31: Climb on heading 316° or as assigned by ATC for vectors to cross LIFRR at 4000, thence. . .

. . . on track 353° to BOBOE, then on assigned transition, maintain ATC assigned altitude, expect clearance to filed altitude within 10 minutes after departure.

BAIRN TRANSITION (LIFRR1.BAIRN)

WIXED TRANSITION (LIFRR1.WIXED)

LIFRR ONE DEPARTURE (RNAV)

(LIFRR1.LIFRR) 19MAY22

FORT LAUDERDALE, FLORIDA

FORT LAUDERDALE EXEC (F^XE)

SE-3, 19 MAY 2022 to 16 JUN 2022