

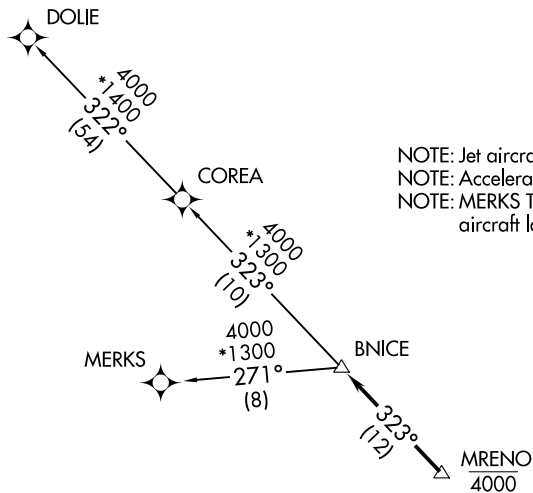
# BNICE ONE DEPARTURE (RNAV)

RNAV 1 - DME/DME/IRU or GPS.

RADAR required.

**TOP ALTITUDE:  
ASSIGNED BY ATC**

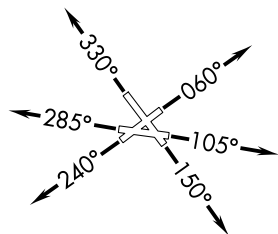
ATIS  
120.55  
GND CON  
121.9  
POMPANO BEACH TOWER \*  
125.4 (CTAF)  
MIAMI DEP CON  
126.05 251.1



NOTE: Jet aircraft only.  
NOTE: Accelerate to 250K, if unable, advise ATC.  
NOTE: MERKS Transition ATC assigned only except aircraft landing: MKY, RSW, APF, PGD, FMY.

### TAKEOFF MINIMUMS

Rwys 6, 10, 15, 24, 28, 33: Standard with minimum climb of 500' per NM to 520.



NOTE: Chart not to scale.



### DEPARTURE ROUTE DESCRIPTION

- TAKEOFF RUNWAY 6: Climb on heading 060° or as assigned by ATC for vectors to cross MRENO at 4000, thence. . .
- TAKEOFF RUNWAY 10: Climb on heading 105° or as assigned by ATC for vectors to cross MRENO at 4000, thence. . .
- TAKEOFF RUNWAY 15: Climb on heading 150° or as assigned by ATC for vectors to cross MRENO at 4000, thence. . .
- TAKEOFF RUNWAY 24: Climb on heading 240° or as assigned by ATC for vectors to cross MRENO at 4000, thence. . .
- TAKEOFF RUNWAY 28: Climb on heading 285° or as assigned by ATC for vectors to cross MRENO at 4000, thence. . .
- TAKEOFF RUNWAY 33: Climb on heading 330° or as assigned by ATC for vectors to cross MRENO at 4000, thence. . .

. . . on track 323° to BNICE, then on assigned transition, maintain ATC assigned altitude, expect clearance to filed altitude within 10 minutes after departure.

- COREA TRANSITION (BNICE1.COREA)
- DOLIE TRANSITION (BNICE1.DOLIE)
- MERKS TRANSITION (BNICE1.MERKS)

SE-3, 19 MAY 2022 to 16 JUN 2022

SE-3, 19 MAY 2022 to 16 JUN 2022