

# DORRL ONE DEPARTURE (RNAV)

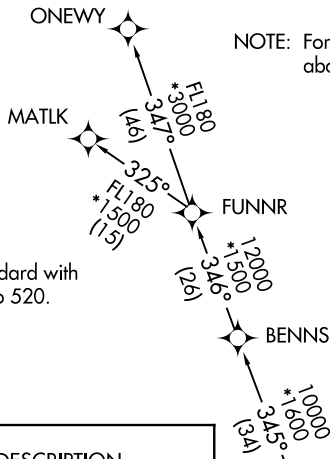
ATIS  
120.55  
GND CON  
121.9  
POMPANO BEACH TOWER ★  
125.4 (CTAF)  
MIAMI DEP CON  
126.05 251.1

**TOP ALTITUDE:  
ASSIGNED BY ATC**

RNAV 1 - DME/DME/IRU or GPS.

RADAR required.

NOTE: For turbo-props/props filed at or above 13000.



### TAKEOFF MINIMUMS

Rwys 6, 10, 15, 24, 28, 33: Standard with minimum climb of 500' per NM to 520.

### DEPARTURE ROUTE DESCRIPTION

TAKEOFF RUNWAY 6: Climb on heading 060° or as assigned by ATC for RADAR vectors to cross LIFRR at 4000, thence. . . .

TAKEOFF RUNWAY 10: Climb on heading 105° or as assigned by ATC for RADAR vectors to cross LIFRR at 4000, thence. . . .

TAKEOFF RUNWAY 15: Climb on heading 150° or as assigned by ATC for RADAR vectors to cross LIFRR at 4000, thence. . . .

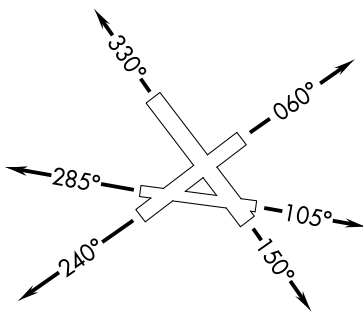
TAKEOFF RUNWAY 24: Climb on heading 240° or as assigned by ATC for RADAR vectors to cross LIFRR at 4000, thence. . . .

TAKEOFF RUNWAY 28: Climb on heading 285° or as assigned by ATC for RADAR vectors to cross LIFRR at 4000, thence. . . .

TAKEOFF RUNWAY 33: Climb on heading 330° or as assigned by ATC for RADAR vectors to cross LIFRR at 4000, thence. . . .

. . . .on track 002° to BOGY, then on track 005° to DORRL then on (transition), maintain altitude as assigned by ATC, expect filed altitude 10 minutes after departure.

MATLK TRANSITION (DORRL1.MATLK)  
ONEWY TRANSITION (DORRL1.ONEWY)



NOTE: Chart not to scale.

# DORRL ONE DEPARTURE (RNAV)

(DORRL1.DORRL) 19MAY22