

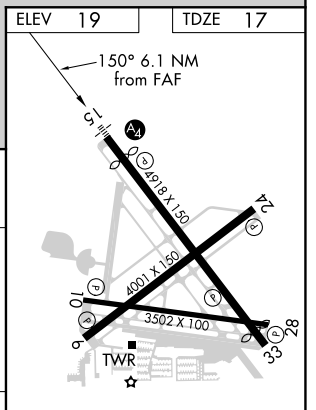
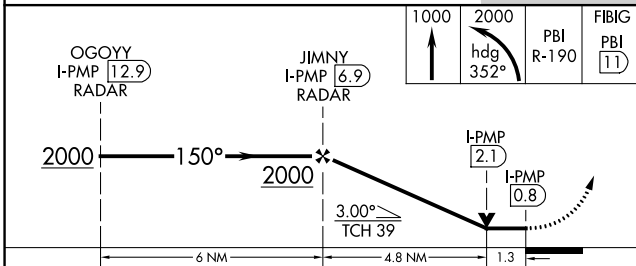
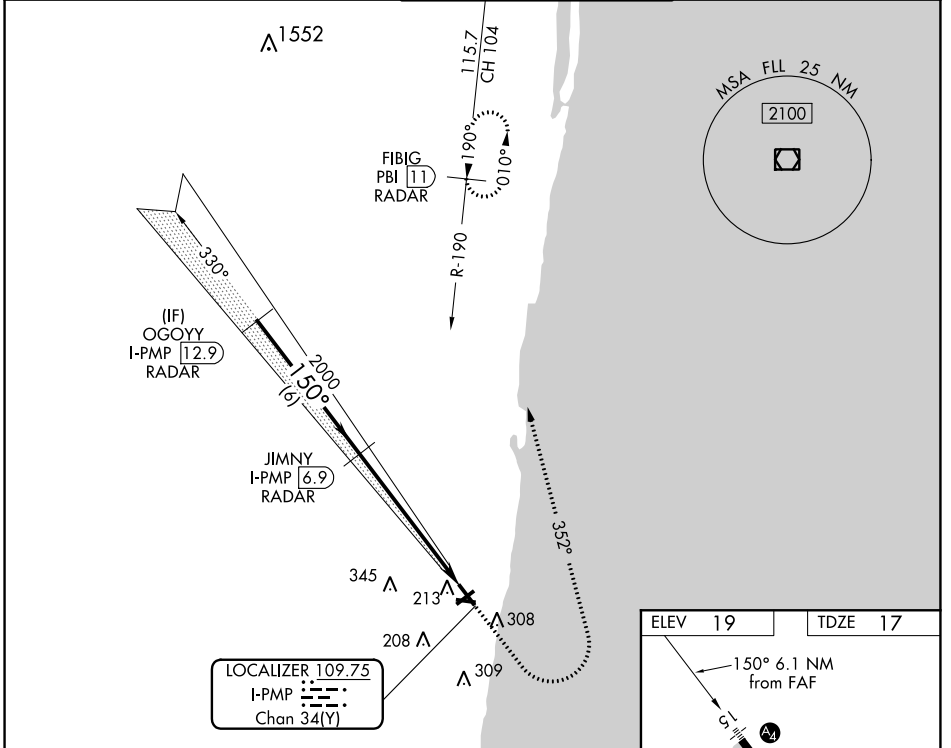
LOC/DME I-PMP <b>109.75</b> Chan <b>34(Y)</b>	APP CRS <b>150°</b>	Rwy ldg <b>4418</b> TDZE <b>17</b> Apt Elev <b>19</b>
---	------------------------	---

# LOC RWY 15

POMPANO BEACH AIRPARK (PMP)

DME required. RADAR required for procedure entry.		MALS 	MISSED APPROACH: Climb to 1000 then climbing left turn to 2000 on heading 352° and PBI VORTAC R-190 to FIBIG/PBI 11 DME/RADAR and hold.
Rwy 15 helicopter visibility reduction below 1 SM NA. Inop table does not apply. Straight-in Rwy 15 NA at night, Circling Rwy 15 NA at night.			

ATIS <b>120.55</b>	MIAMI APP CON <b>119.7 306.3</b>	POMPANO BEACH TOWER ★ <b>125.4 (CTAF) 0</b>	GND CON <b>121.9</b>	UNICOM <b>122.95</b>
-----------------------	-------------------------------------	--	-------------------------	-------------------------



CATEGORY	A	B	C	D
S-LOC 15	480-1	463 (500-1)		NA
CIRCLING	660-1	641 (700-1)		NA

MIRL all Rwys  
REIL Rwy 6, 10, 24 and 28

SE-3, 19 MAY 2022 to 16 JUN 2022

SE-3, 19 MAY 2022 to 16 JUN 2022