

(LIFRR1.LIFRR) 22139

AL-5972 (FAA)

POMPANO BEACH AIRPARK (PMP)
POMPANO BEACH, FLORIDA

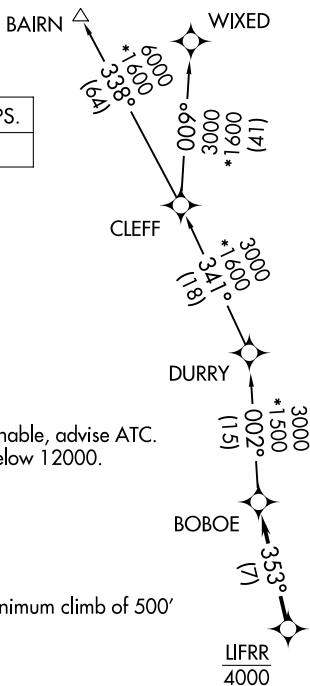
LIFRR ONE DEPARTURE (RNAV)

**TOP ALTITUDE:
ASSIGNED BY ATC**

RNAV 1 - DME/DME/IRU or GPS.

RADAR required.

ATIS 120.55
GND CON 121.9
POMPANO BEACH TOWER * 125.4 (CTAF)
MIAMI DEP CON 126.05 251.1



NOTE: Jet aircraft only.
NOTE: Accelerate to 250K, if unable, advise ATC.
NOTE: For aircraft filed at or below 12000.

TAKEOFF MINIMUMS

Rwys 6, 24, 28, 33: Standard.
Rwys 10, 15: Standard with minimum climb of 500' per NM to 520.

NOTE: Chart not to scale.

DEPARTURE ROUTE DESCRIPTION

- TAKEOFF RUNWAY 6: Climb on heading 060° or as assigned by ATC for vectors to cross LIFRR at 4000, thence. . .
- TAKEOFF RUNWAY 10: Climb on heading 105° or as assigned by ATC for vectors to cross LIFRR at 4000, thence. . .
- TAKEOFF RUNWAY 15: Climb on heading 150° or as assigned by ATC for vectors to cross LIFRR at 4000, thence. . .
- TAKEOFF RUNWAY 24: Climb on heading 240° or as assigned by ATC for vectors to cross LIFRR at 4000, thence. . .
- TAKEOFF RUNWAY 28: Climb on heading 285° or as assigned by ATC for vectors to cross LIFRR at 4000, thence. . .
- TAKEOFF RUNWAY 33: Climb on heading 330° or as assigned by ATC for vectors to cross LIFRR at 4000, thence. . .

. . . on track 353° to BOBOE, then on assigned transition, maintain ATC assigned altitude, expect clearance to filed altitude within 10 minutes after departure.

BAIRN TRANSITION (LIFRR1.BAIRN)
WIXED TRANSITION (LIFRR1.WIXED)

LIFRR ONE DEPARTURE (RNAV)

(LIFRR1.LIFRR) 19MAY22

POMPANO BEACH, FLORIDA
POMPANO BEACH AIRPARK (PMP)

SE-3, 19 MAY 2022 to 16 JUN 2022

SE-3, 19 MAY 2022 to 16 JUN 2022