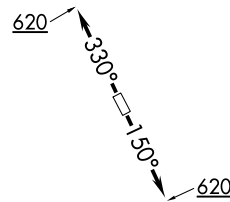


**TOP ALTITUDE:  
ASSIGNED BY ATC**

**TAKEOFF MINIMUMS:**

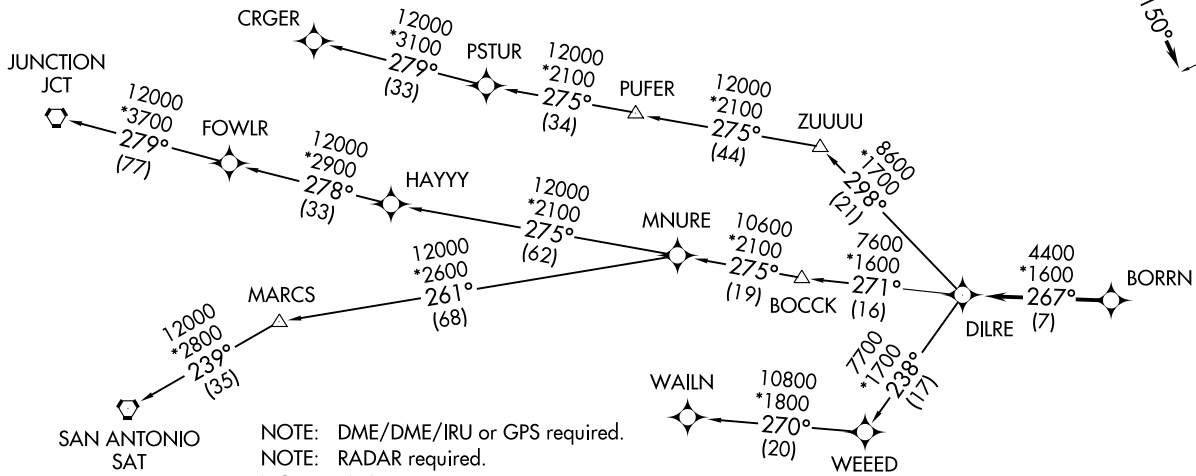
Rwy 15, 33: Standard with minimum  
climb of 500' per NM to 620.



CTAF  
123.05  
CLNC DEL  
121.15  
HOUSTON DEP CON  
123.8 257.7

**BORRN FOUR DEPARTURE (RNAV)**  
(BORRN4, BORRN) 25APR19

**BORRN FOUR DEPARTURE (RNAV)**  
(BORRN4, BORRN) 21112  
AL-6079 (FAA)



- NOTE: DME/DME/IRU or GPS required.
- NOTE: RADAR required.
- NOTE: RNAV 1.
- NOTE: CRGER TRANSITION ATC assigned only for aircraft departing 54T, AXH, EFD, GLS, HPY, IWS, LBX, LVJ, SGR, TME, TØØ, T41.

(NARRATIVE ON FOLLOWING PAGE)

NOTE: Chart not to scale.

**BORRN FOUR DEPARTURE (RNAV)**  
HOUSTON, TEXAS  
WEST HOUSTON (TWS)

**BORRN FOUR DEPARTURE (RNAV)**  
HOUSTON, TEXAS  
WEST HOUSTON (TWS)

# BORRN FOUR DEPARTURE (RNAV)



## DEPARTURE ROUTE DESCRIPTION

TAKEOFF RWY 15: Climb heading 150° to 620, for RADAR vectors to BORRN, thence. . . .

TAKEOFF RWY 33: Climb heading 330° to 620, for RADAR vectors to BORRN, thence. . . .

. . . .on track 267° to DILRE, then on (transition). Maintain ATC assigned altitude. Expect filed altitude 10 minutes after departure.

CRGER TRANSITION (BORRN4.CRGER)

JUNCTION TRANSITION (BORRN4.JCT)

MNURE TRANSITION (BORRN4.MNURE)

SAN ANTONIO TRANSITION (BORRN4.SAT)

WAILN TRANSITION (BORRN4.WAILN)

SC-5, 19 MAY 2022 to 16 JUN 2022

SC-5, 19 MAY 2022 to 16 JUN 2022