

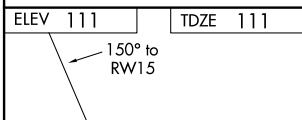
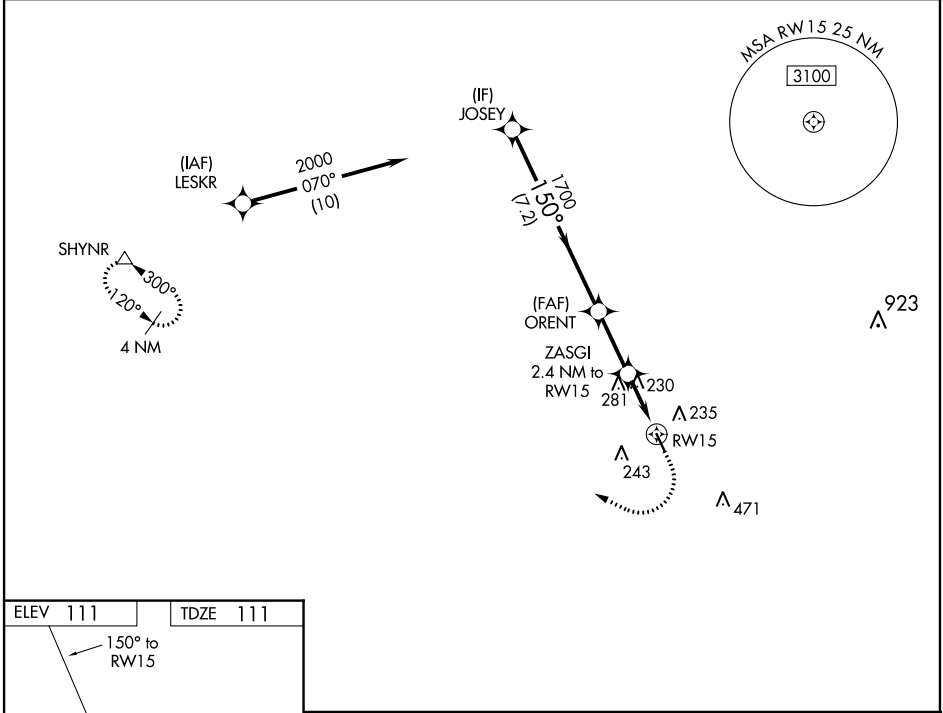
WAAS CH 40429 W15A	APP CRS 150°	Rwy Idg TDZE 111 Apt Elev 111	3953
--	------------------------	---	-------------

RNAV (GPS) RWY 15

WEST HOUSTON (IWS)

RNP APCH.	MISSED APPROACH: Climb to 600 then climbing right turn to 2000 direct SHYNR and hold.
Procedure NA at night. Rwy 15 helicopter visibility reduction below 1 SM NA. Use George Bush Intcnl/Houston altimeter setting.	

HOUSTON APP CON 123.8 257.7	CLNC DEL 121.15	UNICOM 123.05 (CTAF) 0
---------------------------------------	---------------------------	----------------------------------



ELEV 111	TDZE 111	VGSIs and descent angles not coincident (VGSi Angle 3.70/TCH 43).			
		600	2000	SHYNR	
JOSEY 2000 150° 1700 3.00° TCH 45 900 RWY 15					
	7.2 NM	2.5 NM	2.4 NM		
CATEGORY	A	B	C	D	
LP MDA	540-1	429 (500-1)	540-1¼ 429 (500-1¼)	NA	
LNAV MDA	580-1	469 (500-1)	580-1¾ 469 (500-1¾)	NA	
CIRCLING	600-1 489 (500-1)	640-1 529 (600-1)	800-2 689 (700-2)	NA	

REIL Rwy 15 and 33
HIRL Rwy 15-33

SC-5, 19 MAY 2022 to 16 JUN 2022

SC-5, 19 MAY 2022 to 16 JUN 2022