

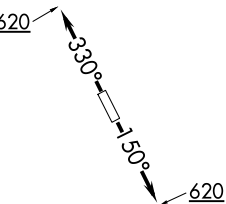
WYLSN EIGHT DEPARTURE (RNAV)

CLNC DEL
121.15
CTAF
123.05
HOUSTON DEP CON
123.8 257.7

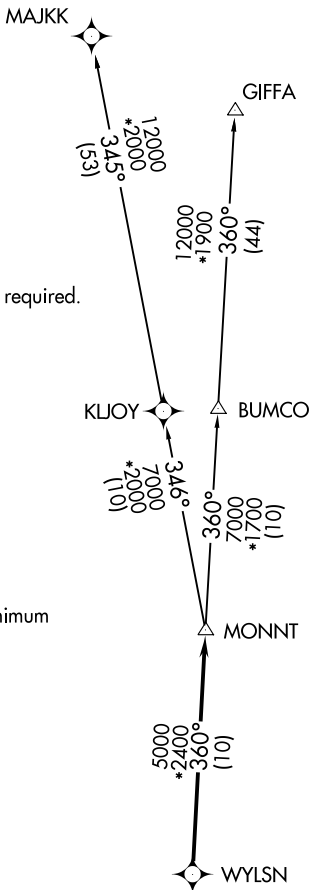
NOTE: RADAR required.
NOTE: DME/DME/IRU or GPS required.
NOTE: RNAV 1.

TAKEOFF MINIMUMS

Rwys 15, 33: Standard with minimum climb of 500' per NM to 620.



NOTE: Chart not to scale.



**TOP ALTITUDE:
ASSIGNED BY ATC**

DEPARTURE ROUTE DESCRIPTION

TAKEOFF RUNWAY 15: Climb on heading 150° to 620 for RADAR vectors to WYLSN, thence. . . .

TAKEOFF RUNWAY 33: Climb on heading 330° to 620 for RADAR vectors to WYLSN, thence. . . .

. . . .on track 360° to MONNT, then on (transition). Maintain ATC assigned altitude. Expect filed altitude 10 minutes after departure.

GIFFA TRANSITION (WYLSN8.GIFFA)

MAJKK TRANSITION (WYLSN8.MAJKK)

WYLSN EIGHT DEPARTURE (RNAV)