

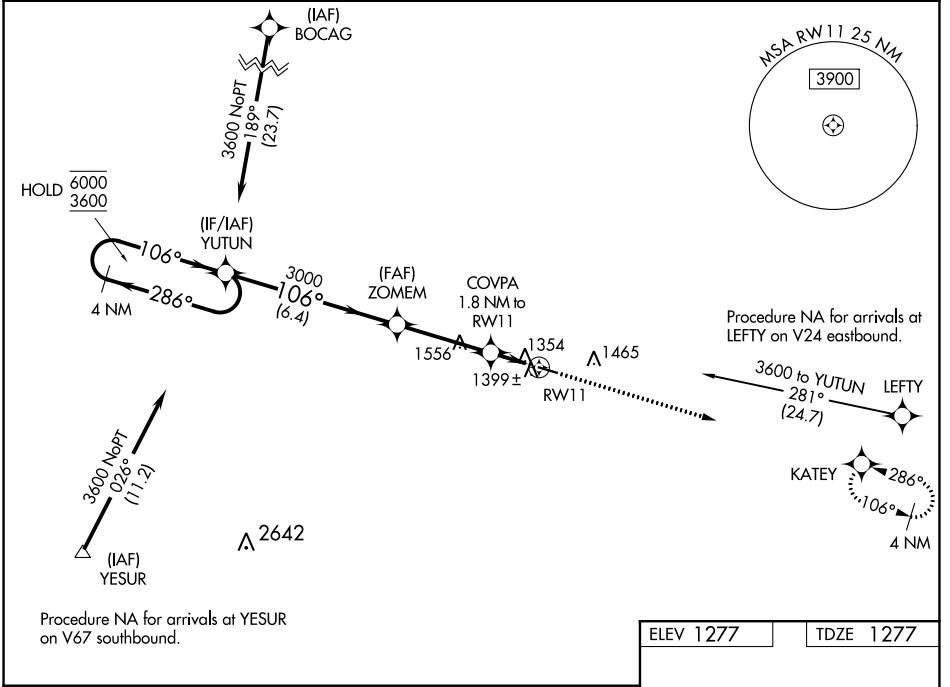
WAAS CH 65829 W11A	APP CRS 106°	Rwy Idg TDZE Apt Elev	4001 1277 1277
--	------------------------	-----------------------------	---

RNAV (GPS) RWY 11

FILLMORE COUNTY (FKA)

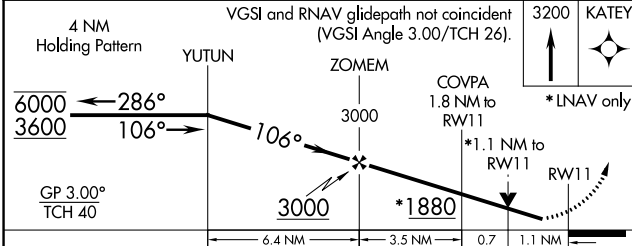
RNP APCH.	<p>▼ Rwy 11 helicopter visibility reduction below 3/4 SM NA.</p> <p>▲ For uncompensated Baro-VNAV systems, LNAV/VNAV NA below -17°C or above 54°C.</p>	MISSED APPROACH: Climb to 3200 direct KATEY and hold.
-----------	--	---

AWOS-3 118.55	ROCHESTER APP CON ★ 119.8 251.125	CTAF 122.9 0
-------------------------	---	------------------------



NC-1, 19 MAY 2022 to 16 JUN 2022

NC-1, 19 MAY 2022 to 16 JUN 2022



CATEGORY	A	B	C	D
LPV DA		1527-1 250 (300-1)		NA
LNAV/VNAV DA		1573-1 296 (300-1)		NA
LNAV MDA	1660-1	383 (400-1)	1660-1 3/8 383 (400-1 1/8)	NA
C CIRCLING	1700-1 423 (500-1)	1900-1 623 (700-1)	1900-1 3/4 623 (700-1 3/4)	NA

ELEV 1277	TDZE 1277
-----------	-----------

REIL Rwy 11 and 29
MIRL Rwy 11-29 0