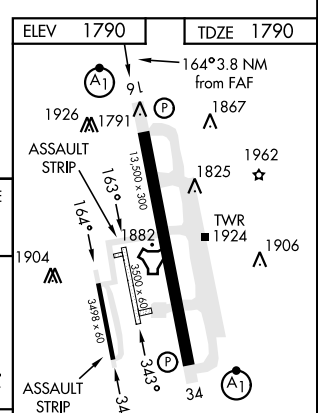
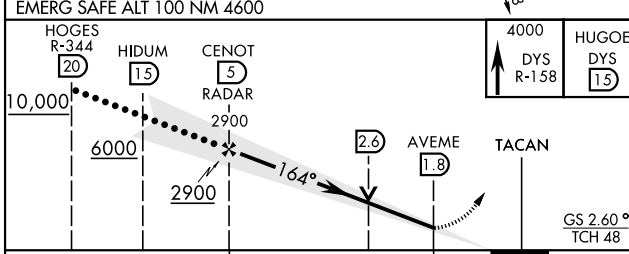
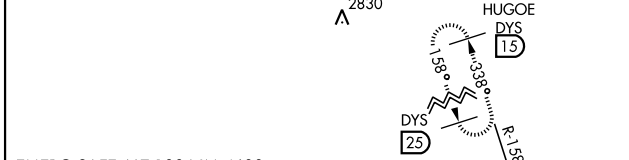
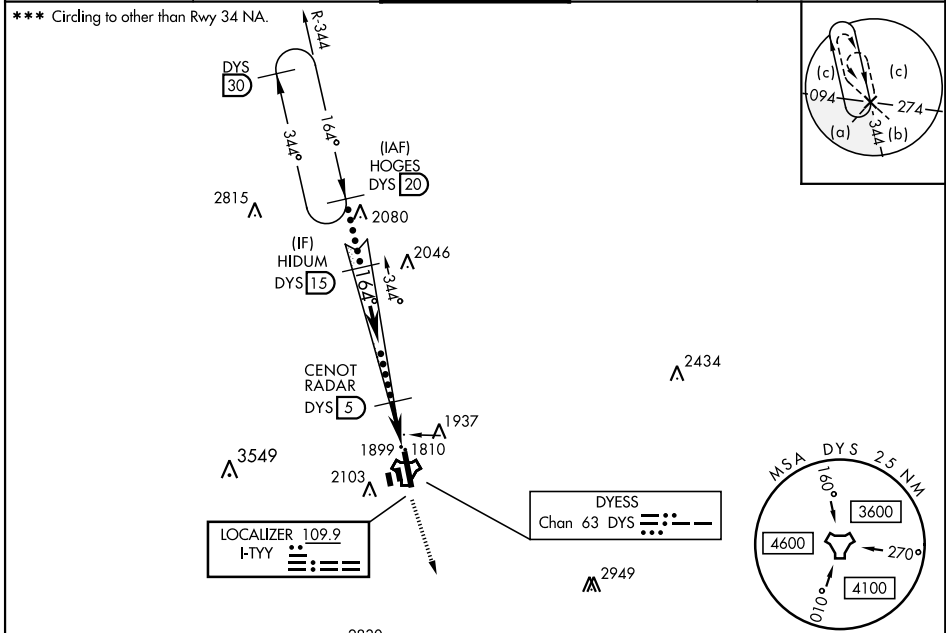


HI-ILS or LOC X RWY 16

LOC I-TYY 109.9	APCH CRS 164°	Rwy Idg 13,500 TDZE 1790 Arprt Elev 1790	AL-2 [USAF]	DYESS AFB (KDYS)
RADAR or DME required.			ALSF-1 (A1)	MISSED APPROACH: Climb to 4000 via DYS TACAN R-158 to HUGOE and hold.
* When ALS inop, increase CAT CDE RVR to 40 and vis to ¼ mile. ** When ALS inop, increase CAT CDE RVR vis to 1 ¼ miles.				

ATIS ★ 269.175	ABILENE APP CON 125.0 338.3 EAST 127.2 282.3 WEST	TOWER 133.0 257.675	GND CON 118.35 275.8	ASR
--------------------------	---	-------------------------------	--------------------------------	-----



CATEGORY	C	D	E	
S-ILS 16 *	1990/24	200	(200-½)	
S-LOC 16 **	2220/40	430	(500-¾)	
*** CIRCLING	2460-1¾ 670 (700-1¾)	2460-2 670 (700-2)	2460-2¼ 670 (700-2¼)	
LIRL Rwy 164°-344°				
HIRL Rwy 16-34				
FAF to MAP 3.2 NM				
Knots	120	140	160	180 200
Min:Sec	1:36	1:22	1:12	1:04 0:58

HI-ILS or LOC X RWY 16

SC-2, 16 JUN 2022 to 14 JUL 2022

SC-2, 16 JUN 2022 to 14 JUL 2022