

HI-ILS or LOC X RWY 34

LOC I-DYS 109.9	APCH CRS 344°	Rwy Idg 13,500 TDZE 1788 Arprt Elev 1790
---------------------------	-------------------------	---

AL-2 [USAF]

DYESS AFB (KDYS)

RADAR or DME required.

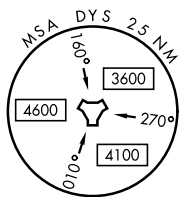
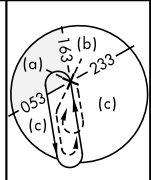
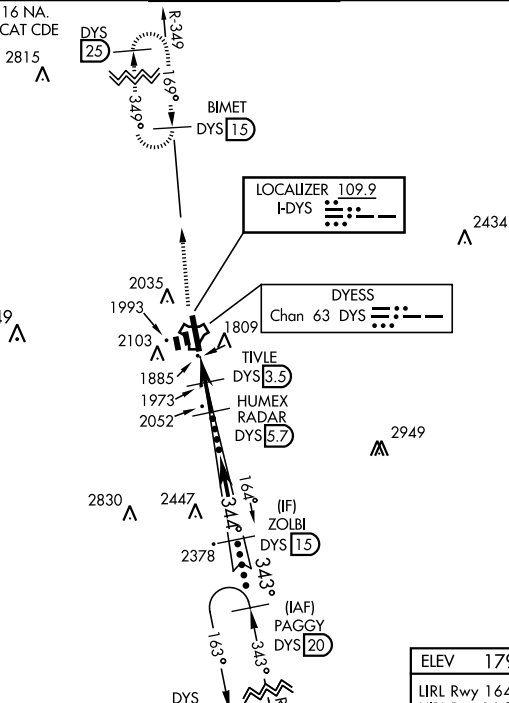
ALSIF-1

MISSED APPROACH: Climb to 4000 via
DYS TACAN R-349 to BIMET and hold.

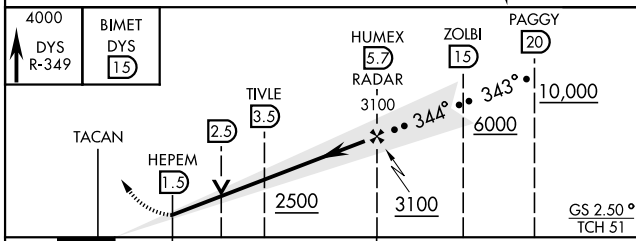
- * When ALS inop, increase CAT CDE RVR to 40 and vis to ¾ mile.
- ** When ALS inop, increase CAT CDE vis to 1 ¾ miles.

ATIS ★ 269.175	ABILENE APP CON 125.0 338.3 EAST 127.2 282.3 WEST	TOWER 133.0 257.675	GND CON 118.35 275.8	ASR
--------------------------	---	-------------------------------	--------------------------------	-----

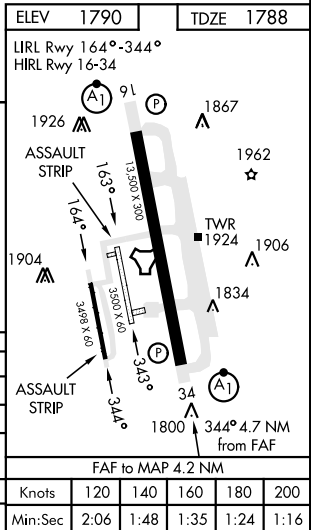
- *** Circling to other than Rwy 16 NA.
- **** When ALS inop, increase CAT CDE vis to 1 ½ miles.



EMERG SAFE ALT 100 NM 4600



CATEGORY	C	D	E
S-ILS 34 *	1988/24	200 (200-½)	
S-LOC 34 **	2240/45	452 (500-¾)	
CIRCLING ***	2460-1 ¼ 670 (700-1 ¼)	2460-2 670 (700-2)	2460-2 ¼ 670 (700-2 ¼)
	WITHOUT LAST STEPDOWN FIX		
S-LOC 34 ****	2320/55	532 (600-1)	



SC-2, 16 JUN 2022 to 14 JUL 2022

SC-2, 16 JUN 2022 to 14 JUL 2022

HI-ILS or LOC X RWY 34