

WAAS CH <b>97415</b> <b>W35A</b>	APP CRS <b>347°</b>	Rwy Idg <b>5219</b> TDZE <b>196</b> Apt Elev <b>196</b>
--	------------------------	---

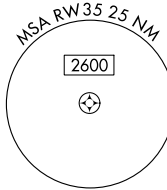
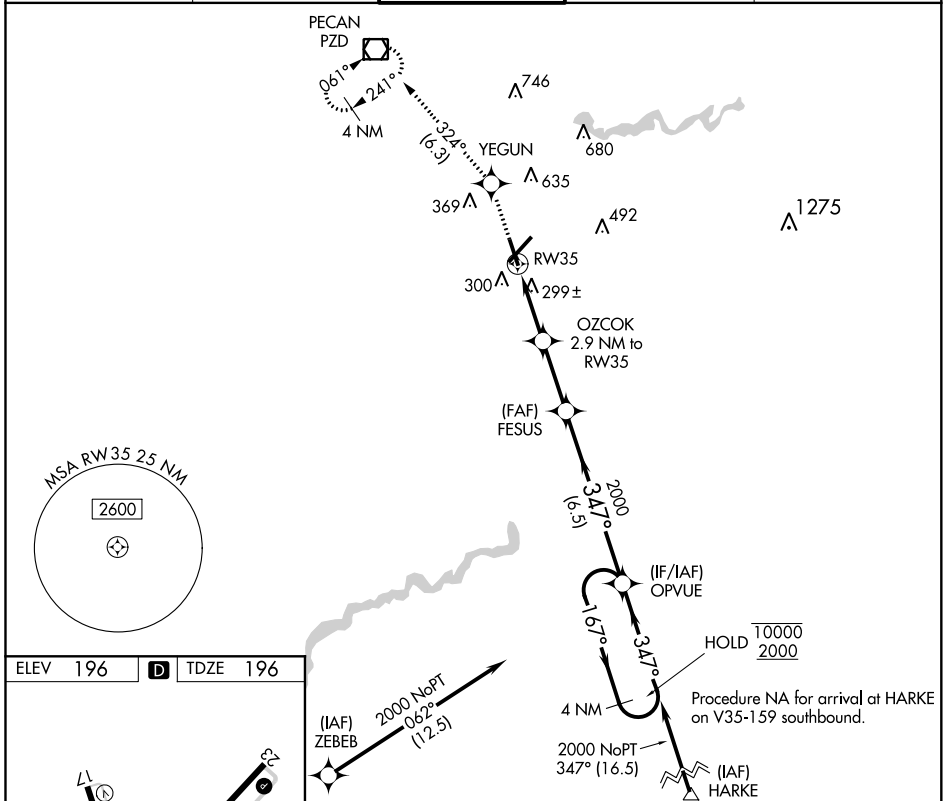
# RNAV (GPS) RWY 35

SOUTHWEST GEORGIA RGNL (ABY)

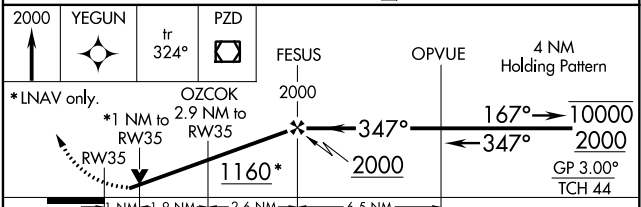
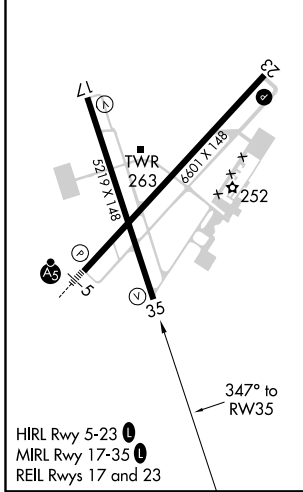
RNP APCH.  
 ▼ For uncompensated Baro-VNAV systems, LNAV/VNAV NA below -7°C or above 54°C. Rwy 35 helicopter visibility reduction below 3/4 SM NA.

MISSED APPROACH: Climb to 2000 direct YEGUN and on track 324° to PZD VOR/DME and hold.

ATIS <b>133.05</b>	JACKSONVILLE CENTER <b>125.75 226.8</b>	ALBANY TOWER * <b>120.25 (CTAF) 0336.4</b>	GND CON <b>121.9 348.6</b>	UNICOM <b>122.95</b>
-----------------------	--	---	-------------------------------	-------------------------



ELEV 196	<b>D</b> TDZE 196
----------	-------------------



2000	YEGUN	tr 324°	PZD	FESUS	OPVUE	4 NM Holding Pattern
*LNAV only.		*1 NM to RW35		OZCOK 2.9 NM to RW35	1160*	2000
1 NM		1.9 NM	2.6 NM	6.5 NM		
CATEGORY	A	B	C	D		
LPV DA		495-1	299 (300-1)			
LNAV/VNAV DA		475-1	279 (300-1)			
LNAV MDA		560-1	364 (400-1)			
<b>C</b> CIRCLING	640-1 444 (500-1)	660-1 464 (500-1)	940-2 1/4 744 (800-2 1/4)	940-2 1/2 744 (800-2 1/2)		

SE-4, 16 JUN 2022 to 14 JUL 2022

SE-4, 16 JUN 2022 to 14 JUL 2022