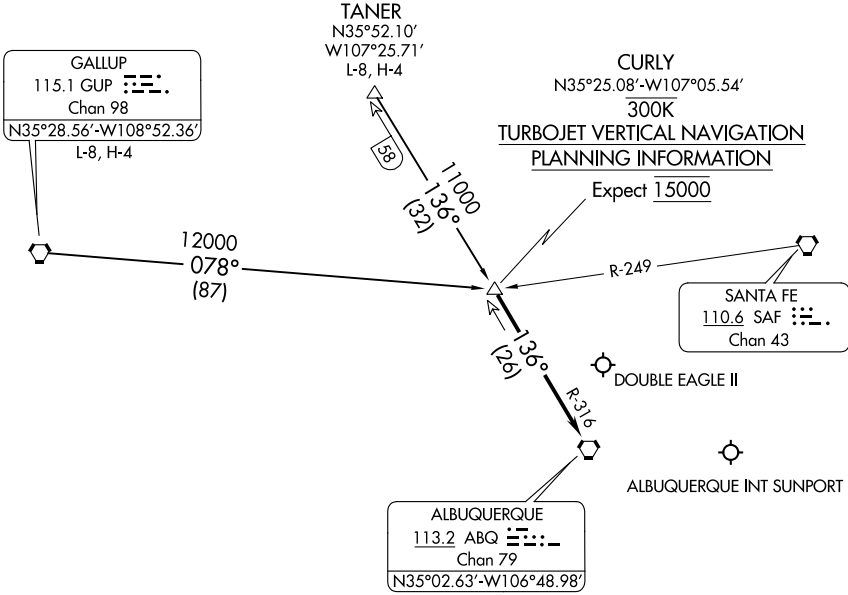


# CURLY THREE ARRIVAL

AL-12 (FAA)

ALBUQUERQUE, NEW MEXICO

ALBUQUERQUE APP CON  
 127.4 253.5  
 ABQ D-ATIS  
 118.0 257.7  
 AEG ATIS  
 119.025



SW-1, 16 JUN 2022 to 14 JUL 2022

SW-1, 16 JUN 2022 to 14 JUL 2022

NOTE: Chart not to scale.

## ARRIVAL ROUTE DESCRIPTION

GALLUP TRANSITION (GUP.CURLY3): From over GUP VORTAC on GUP R-078 to CURLY.  
 Thence. . . .

TANER TRANSITION (TANER.CURLY3): From over TANER on ABQ R-316 to CURLY.  
 Thence. . . .

. . . .From over CURLY on ABQ R-316 to ABQ VORTAC. Expect vectors to final approach course after passing CURLY.