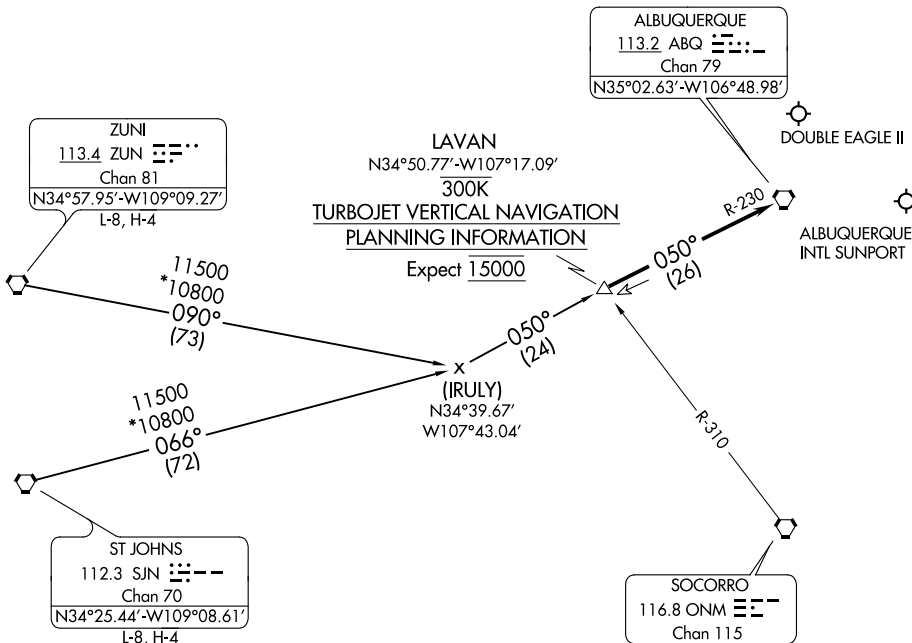


LAVAN THREE ARRIVAL

AL-12 (FAA)

ALBUQUERQUE, NEW MEXICO

ALBUQUERQUE APP CON
 123.9 354.1
 ABQ D-ATIS
 118.0 257.7
 AEG ATIS
 119.025
 GND CON
 121.9 348.6
 ALBUQUERQUE TOWER
 120.3 351.9



SW-1, 16 JUN 2022 to 14 JUL 2022

SW-1, 16 JUN 2022 to 14 JUL 2022

NOTE: Chart not to scale.

ARRIVAL ROUTE DESCRIPTION

ST. JOHNS TRANSITION (SJN.LAVAN3): From over SJN VORTAC via SJN R-066 and ABQ R-230 to LAVAN DME/INT. Thence. . . .

ZUNI TRANSITION (ZUN.LAVAN3): From over ZUN VORTAC via ZUN R-090 and ABQ R-230 to LAVAN DME/INT. Thence. . . .

. . . .From over LAVAN fix/INT via ABQ R-230 to ABQ VORTAC. Expect vectors to final approach course after passing LAVAN.