

APP CRS 214°	Rwy Idg 10000 TDZE 5316 Apt Elev 5355
------------------------	--

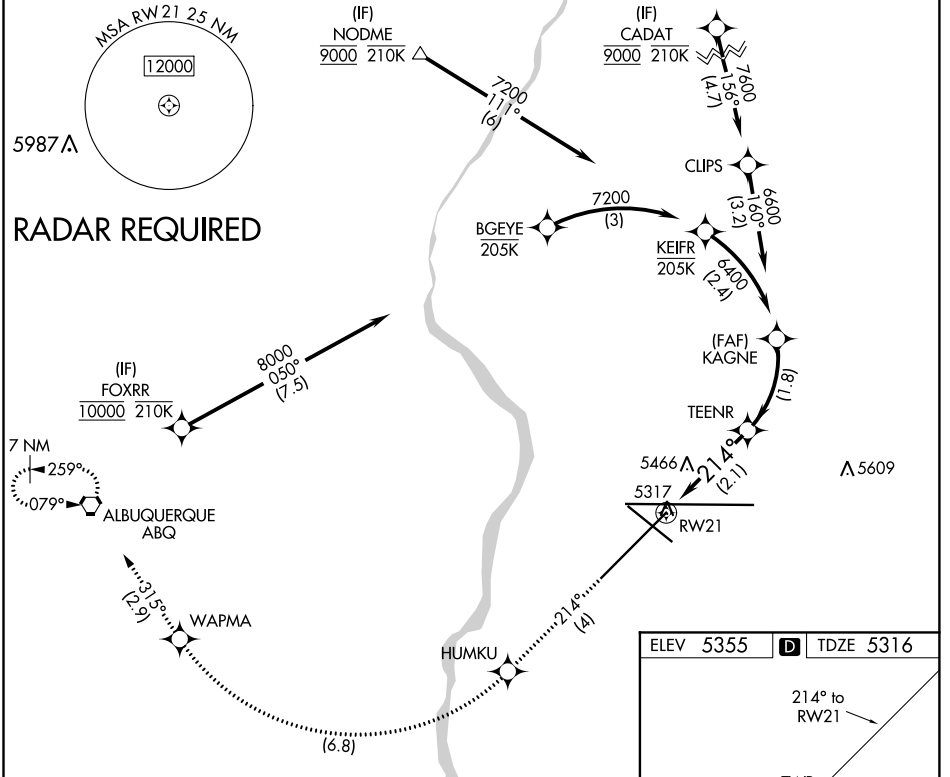
RNAV (RNP) Y RWY 21

ALBUQUERQUE INTL SUNPORT (ABQ)

ASR For uncompensated Baro-VNAV systems, procedure NA below -12°C (11°F) or above 47°C (116°F). RF Required. GPS Required.

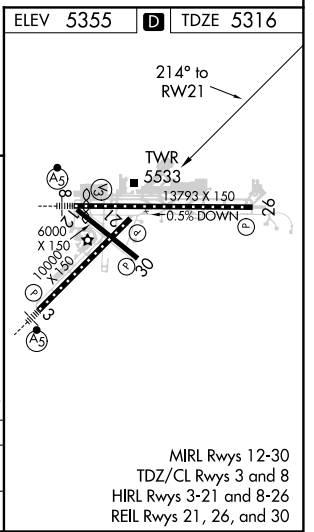
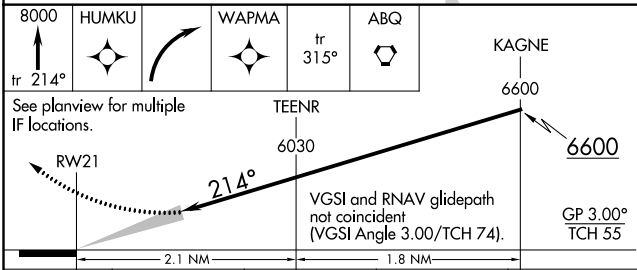
MISSED APPROACH: Climb to 8000 on track 214° to HUMKU, right turn to WAPMA, then on track 315° to ABQ VORTAC and hold.

D-ATIS 118.0 257.7	ALBUQUERQUE APP CON 123.9 354.1	ALBUQUERQUE TOWER 120.3 351.9	GND CON 121.9 348.6	CLNC DEL 119.2 259.3	CPDLC
------------------------------	---	---	-------------------------------	--------------------------------	-------



SW-1, 16 JUN 2022 to 14 JUL 2022

SW-1, 16 JUN 2022 to 14 JUL 2022



CATEGORY	A	B	C	D
RNP 0.30 DA		5758-1½	442 (500-1½)	

AUTHORIZATION REQUIRED

MIRL Rwy 12-30
TDZ/CL Rwy 3 and 8
HIRL Rwy 3-21 and 8-26
REIL Rwy 21, 26, and 30