

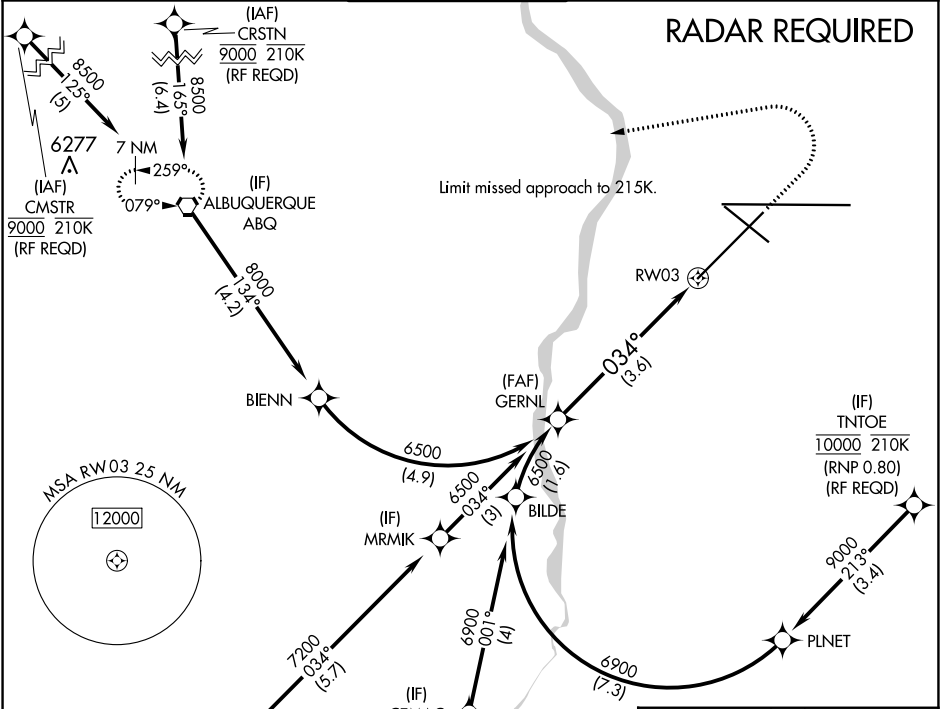
APP CRS 034°	Rwy Idg 10000
	TDZE 5312
	Apt Elev 5355

RNAV (RNP) Z RWY 3

ALBUQUERQUE INTL SUNPORT (ABQ)

<p>ASR For uncompensated Baro-VNAV systems, procedure NA below -12°C (11°F) or above 45°C (114°F). For inop MALSRS, increase RNP 0.30 all Cats visibility to RVR 4000. GPS required.</p>	<p>MALSRS </p> <p>MISSED APPROACH: Climb to 6200 then climbing left turn to 8000 direct ABQ VORTAC and hold.</p>
---	--

D-ATIS 118.0 257.7	ALBUQUERQUE APP CON 123.9 354.1	ALBUQUERQUE TOWER 120.3 351.9	GND CON 121.9 348.6	CLNC DEL 119.2 259.3	CPDLC
------------------------------	---	---	-------------------------------	--------------------------------	-------

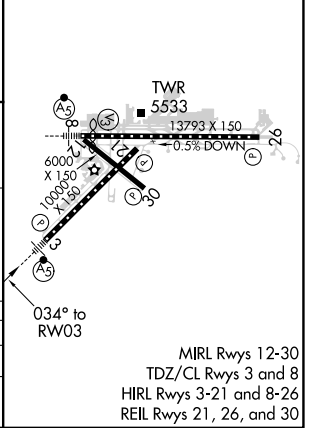
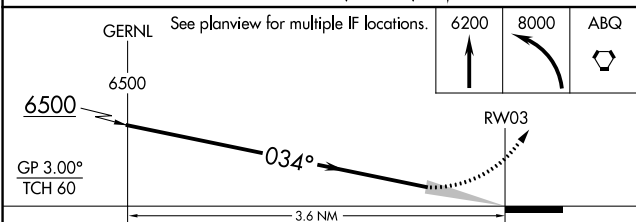


SW-1, 16 JUN 2022 to 14 JUL 2022

SW-1, 16 JUN 2022 to 14 JUL 2022

ELEV 5355	D TDZE 5312
-----------	--------------------

(IAF) BIBQU 8000 210K	(IAF) CEMAC	(IAF) COMRO 10000 210K (RNP 0.80) (RF REQD)	(IF) GERNL	(IF) MRMIK	(IF) BILDE	(IF) PLNET	(IF) TINTOE 10000 210K (RNP 0.80) (RF REQD)
--------------------------	-------------	--	------------	------------	------------	------------	--



CATEGORY	A	B	C	D
RNP 0.30 DA	5571/24		259 (300-½)	

AUTHORIZATION REQUIRED