

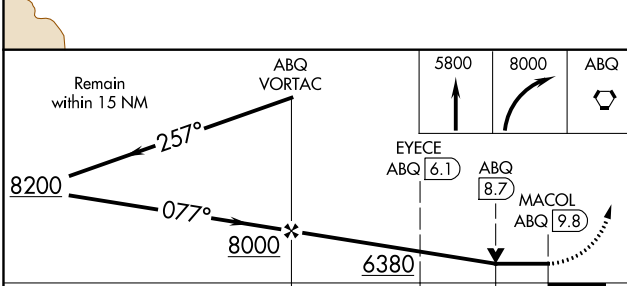
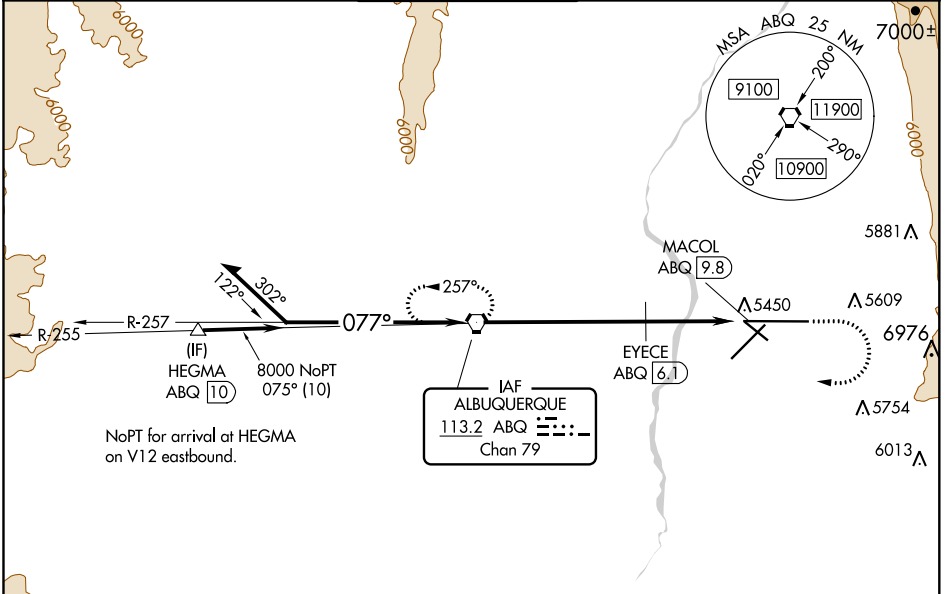
VORTAC ABQ 113.2 Chan 79	APP CRS 077°	Rwy Idg 12793 TDZE 5320 Apt Elev 5355
--	------------------------	--

VOR RWY 8

ALBUQUERQUE INTL SUNPORT (ABQ)

<p>▲ EYECE FIX MINIMUMS: For inop ALS, increase S-8 Cat C/D/E visibility to RVR 5500.</p> <p>ASR For inop ALS, increase S-8 Cat E visibility to 3 SM. Circling Cat E N/A southeast of Rwy 3-21 and northeast of Rwy 12-30.</p>	<p>MALS R</p>	<p>MISSED APPROACH: Climb to 5800 then climbing right turn to 8000 direct ABQ VORTAC and hold.</p>

D-ATIS 118.0 257.7	ALBUQUERQUE APP CON 123.9 354.1	ALBUQUERQUE TOWER 120.3 351.9	GND CON 121.9 348.6	CLNC DEL 119.2 259.3	CPDLC
------------------------------	---	---	-------------------------------	--------------------------------	-------



ELEV 5355	D TDZE 5320
-----------	--------------------

CATEGORY	A	B	C	D	E
S-8	6380/40 1060 (1100-3/4)	6380/55 1060 (1100-1)	6380-2 1/2		1060 (1100-2 1/2)
CIRCLING	6380-1 1/4 1025 (1100-1 1/4)	6380-1 1/2 1025 (1100-1 1/2)	6380-3 1025 (1100-3)	6460-3 1105 (1200-3)	7460-3 2105 (2200-3)
EYECE FIX MINIMUMS					
S-8	5700/24	380 (400-1/2)	5700/40		380 (400-3/4)
CIRCLING	5840-1 485 (500-1)	5920-1 565 (600-1)	5940-1 1/2 585 (600-1 1/2)	6460-3 1105 (1200-3)	7460-3 2105 (2200-3)

SW-1, 16 JUN 2022 to 14 JUL 2022

SW-1, 16 JUN 2022 to 14 JUL 2022