


LOC I-ERJ 110.1	APP CRS 141°	Rwy Idg 9352 TDZE 85 Apt Elev 89
---------------------------	------------------------	---

ILS or LOC RWY 14

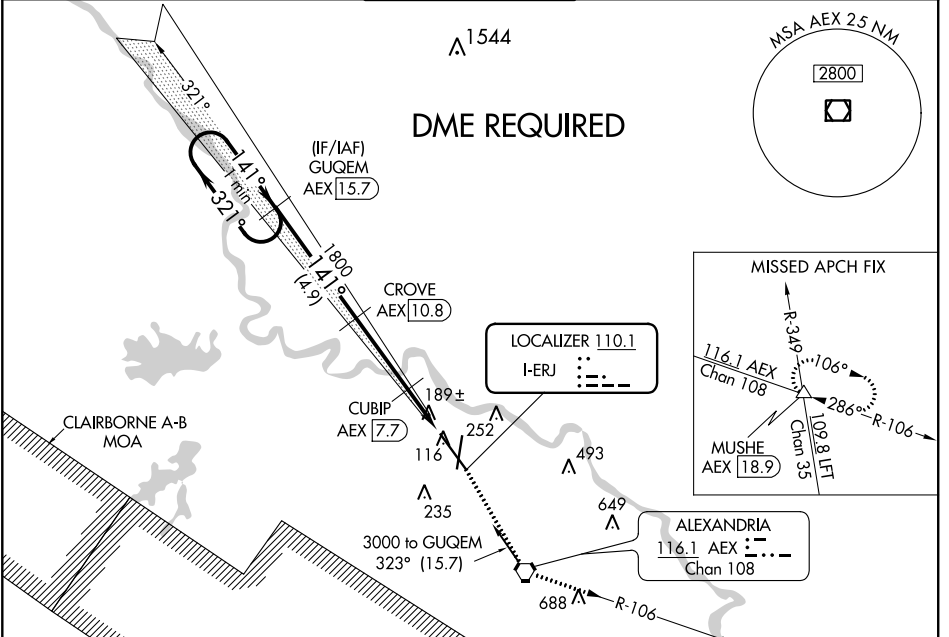
ALEXANDRIA INTL (AEX)

▼ DME from AEX VORTAC. Simultaneous reception of I-ERJ and AEX DME required. When R-3801 B active, RADAR and DME required. DME required.
▲ **RVR 1800 authorized with use of FD or AP or HUD to DA.

SSALR 

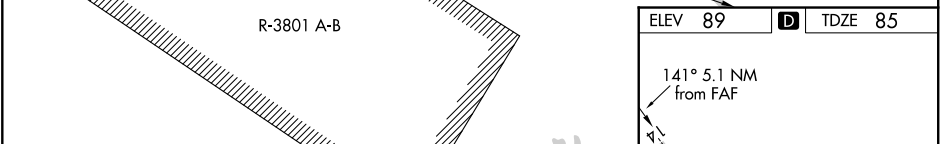
MISSED APPROACH: Climb to 4000 direct AEX VORTAC and on AEX VORTAC R-106 to MUSHE INT/18.9 DME and hold.

ASOS 123.975	POLK APP CON 125.4 254.8	ALEXANDRIA TOWER 127.35 (CTAF) 269.2	GND CON 121.9 372.0	CLNC DEL 121.9
------------------------	------------------------------------	--	-------------------------------	--------------------------

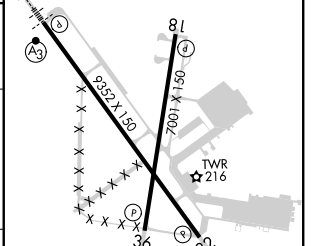
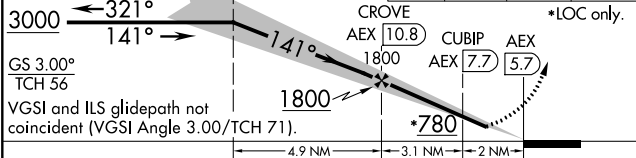


SC-4, 16 JUN 2022 to 14 JUL 2022

SC-4, 16 JUN 2022 to 14 JUL 2022



ELEV 89	D	TDZE 85
---------	----------	---------



CATEGORY	A	B	C	D
S-ILS 14 **		285/24	200 (200-½)	
S-LOC 14		460/24	375 (400-½)	460/40 375 (400-¾)
CIRCLING	540-1 451 (500-1)	560-1 471 (500-1)	700-1¾ 611 (700-1¾)	860-2½ 771 (800-2½)

REIL Rwy 18, 32 and 36
 HIRL Rwy 18-36 and 14-32