

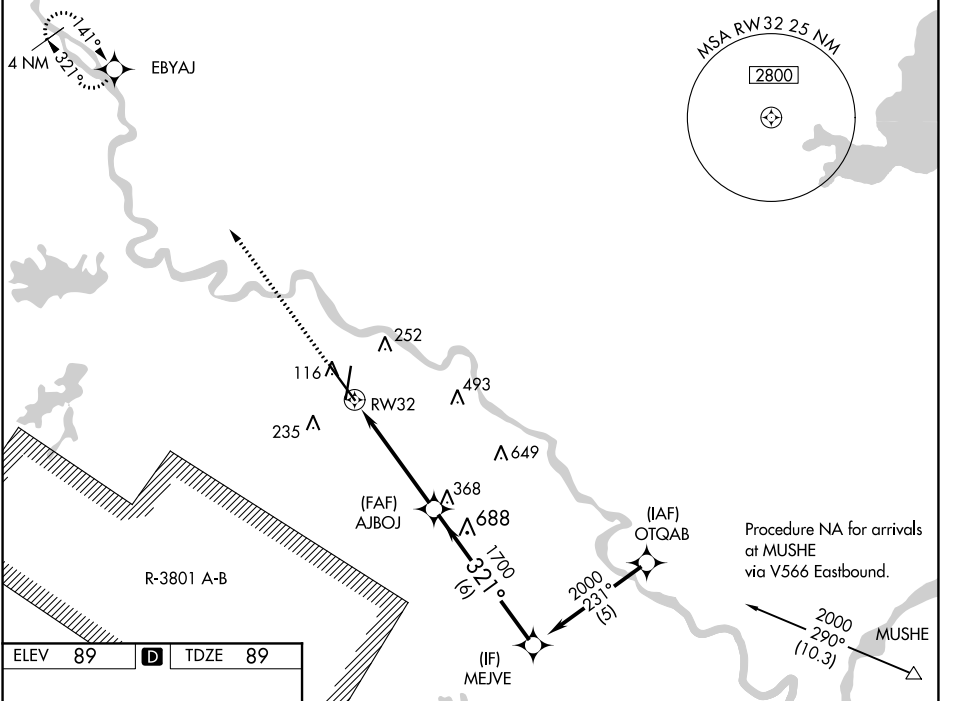
WAAS CH 50110 W32A	APP CRS 321°	Rwy Idg 9352 TDZE 89 Apt Elev 89
--	------------------------	---

RNAV (GPS) RWY 32

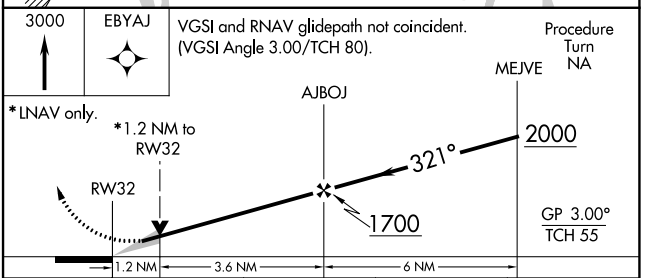
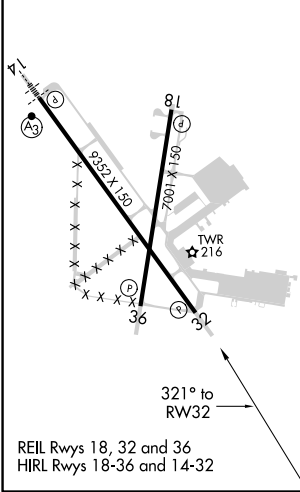
ALEXANDRIA INTL (AEX)

▼ DME/DME RNP-0.3 NA. ▲ Baro-VNAV NA below -1.5°C (5°F). When R-3801A-B active, RADAR required.	MISSED APPROACH: Climb to 3000 direct EBYAJ WP and hold.
---	---

ASOS 123.975	POLK APP CON 125.4 254.8	ALEXANDRIA TOWER 127.35 (CTAF) 269.2	GND CON 121.9 372.0	CLNC DEL 121.9
------------------------	------------------------------------	--	-------------------------------	--------------------------



ELEV 89	D	TDZE 89
---------	----------	---------



CATEGORY	A	B	C	D
LPV DA		340/50 251 (300-1)		
LNAV/VNAV DA		460/60 371 (400-1¼)		
LNAV MDA	520/50	431 (500-1)	520/60 431 (500-1¼)	520-1½ 431 (500-1½)
CIRCLING	540-1 451 (500-1)	560-1 471 (500-1)	700-1¾ 611 (700-1¾)	860-2½ 771 (800-2½)

SC-4, 16 JUN 2022 to 14 JUL 2022

SC-4, 16 JUN 2022 to 14 JUL 2022