

WAAS CH 58100 W36A	APP CRS 006°	Rwy Idg 7001 TDZE 87 Apt Elev 89
--	------------------------	---

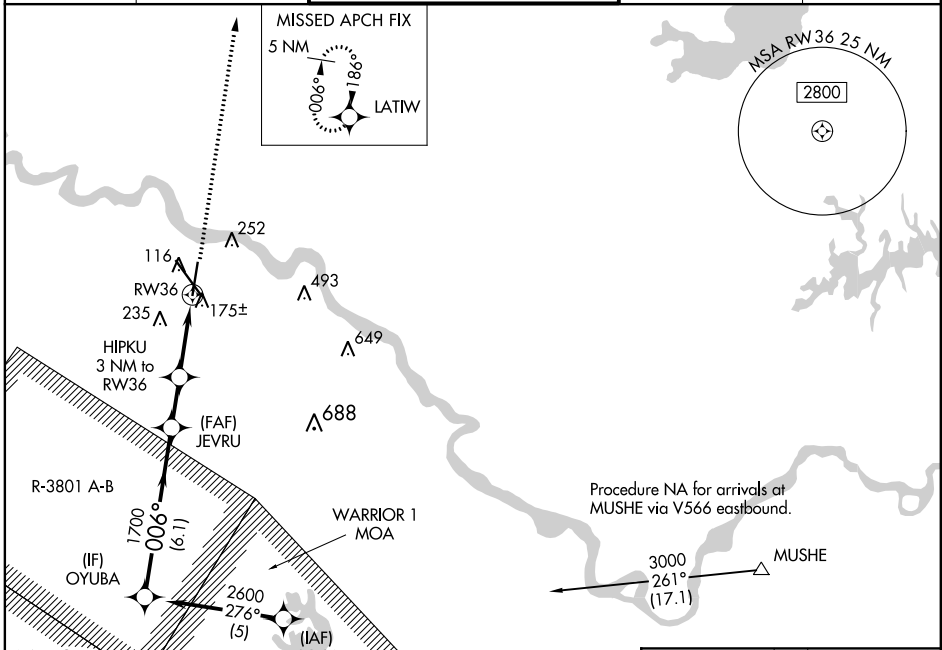
RNAV (GPS) RWY 36

ALEXANDRIA INTL (AEX)

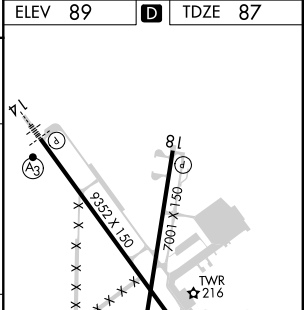
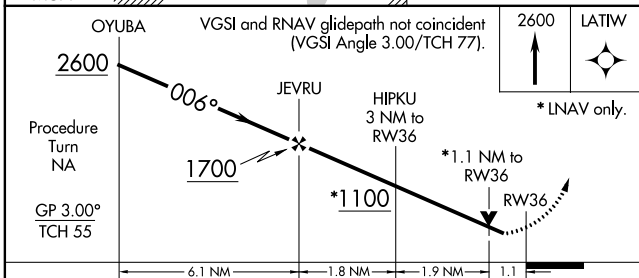
⚠ DME/DME RNP-0.3 NA. When R-3801 A-B in use, procedure NA. For uncompensated Baro-VNAV systems, LNAV/VNAV NA below -15°C (5°F) or above 48°C (119°F).
⚠ Rwy 36 helicopter visibility reduction below ¾ SM NA.

MISSED APPROACH: Climb to 2600 direct LATIW and hold.

ASOS 123.975	POLK APP CON 125.4 254.8	ALEXANDRIA TOWER 127.35 (CTAF) 269.2	GND CON 121.9 372.0	CLNC DEL 121.9
------------------------	------------------------------------	--	-------------------------------	--------------------------



ELEV 89	D	TDZE 87
----------------	----------	----------------



CATEGORY	A	B	C	D
LPV DA	391-1		304 (400-1)	
LNAV/VNAV DA	425-1¼		338 (400-1¼)	
LNAV MDA	500-1	413 (500-1)	500-1¼	413 (500-1¼)
CIRCLING	540-1 451 (500-1)	560-1 471 (500-1)	700-1¾ 611 (700-1¾)	860-2½ 771 (800-2½)

006° to RW36

REIL Rwy 18, 32 and 36
 HIRL Rwy 18-36 and 14-32

SC-4, 16 JUN 2022 to 14 JUL 2022

SC-4, 16 JUN 2022 to 14 JUL 2022