

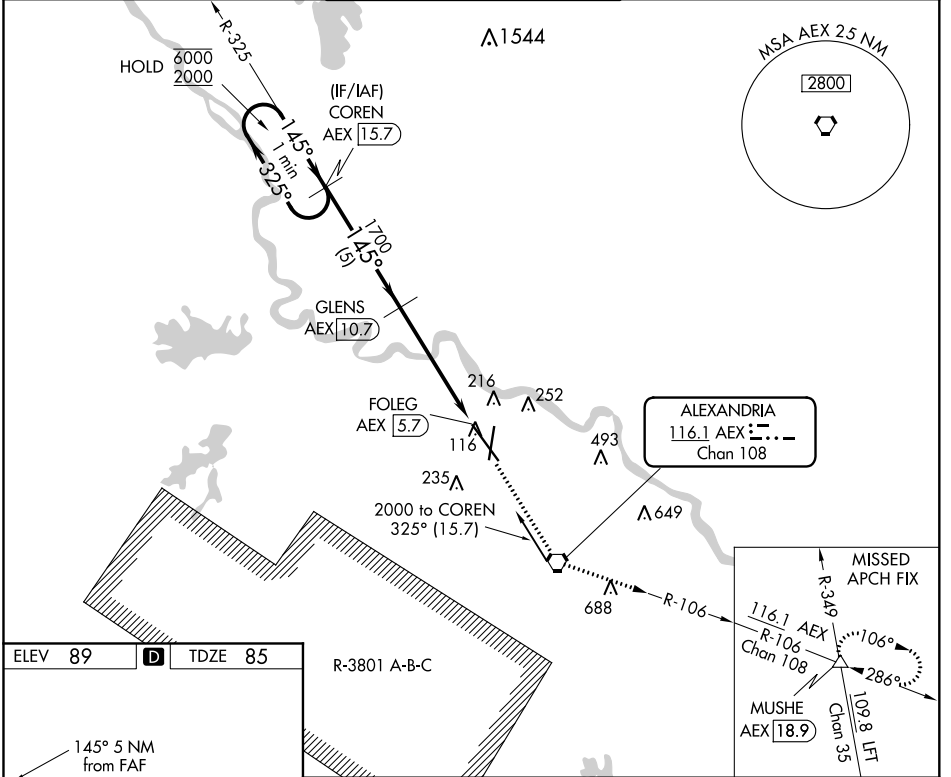
VORTAC AEX 116.1 Chan 108	APP CRS 145°	Rwy Idg TDZE Apt Elev 9352 85 89
---	------------------------	--

VOR RWY 14

ALEXANDRIA INTL (AEX)

DME required.		SSALR	MISSED APPROACH: Climb to 4000 direct AEX VORTAC, then on AEX VORTAC R-106 to MUSHE INT and hold.
When R-3801B active, RADAR required.			

ASOS 123.975	POLK APP CON 125.4 254.8	ALEXANDRIA TOWER 127.35 (CTAF) 269.2	GND CON 121.9 372.0	CLNC DEL 121.9
------------------------	------------------------------------	--	-------------------------------	--------------------------

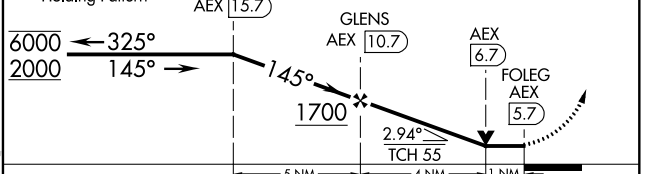


ELEV 89	D	TDZE 85
---------	----------	---------

R-3801 A-B-C

145° 5 NM from FAF

VGSI and descent angles not coincident (VGSI Angle 3.00/TCH 71).			
One Minute Holding Pattern	COREN AEX 15.7	GLENS AEX 10.7	AEX 6.7



CATEGORY	A	B	C	D
S-14	480/24 395 (400-1/2)		480/35 395 (400-3/4)	480/55 395 (400-1)
CIRCLING	540-1 451 (500-1)	560-1 471 (500-1)	700-1 3/4 611 (700-1 3/4)	860-2 1/2 771 (800-2 1/2)

SC-4, 16 JUN 2022 to 14 JUL 2022

SC-4, 16 JUN 2022 to 14 JUL 2022