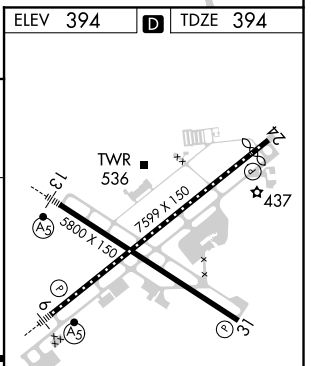
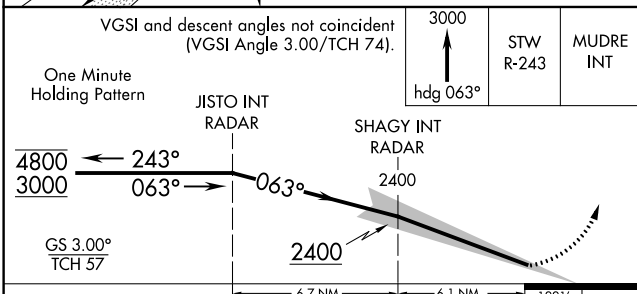
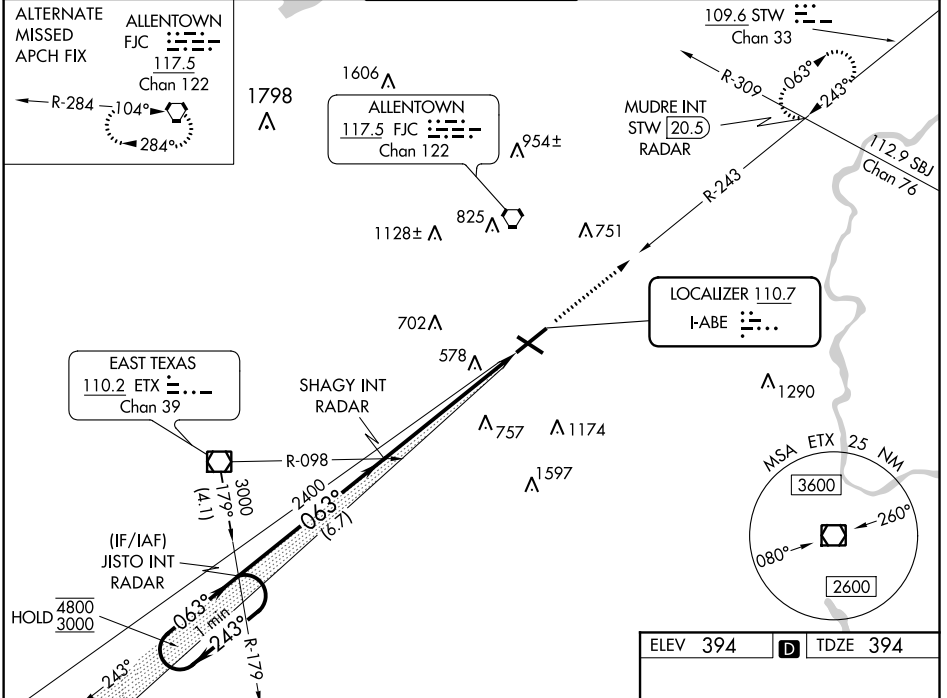


LOC I-ABE <b>110.7</b>	APP CRS <b>063°</b>	Rwy Idg TDZE Apt Elev	<b>7599</b> <b>394</b> <b>394</b>
---------------------------	------------------------	-----------------------------	---

# ILS RWY 6 (SA CAT I & II)

## LEHIGH VALLEY INTL (ABE)

<b>▽</b> <b>△</b>	SA CAT I: Requires specific OPSPEC, MSPEC, or LOA approval and use of HUD to DH. SA CAT II: Reduced lighting: Requires specific OPSPEC, MSPEC, or LOA approval and use of autoland or HUD to touchdown.	MALSR 	MISSED APPROACH: Climb to 3000 on heading 063° and STW R-243 to MUDRE INT/STW 20.5 DME/RADAR and hold.	
ATIS <b>126.975</b>	ALLENTOWN APP CON <b>119.65 124.45 351.8</b>	ALLENTOWN TOWER <b>120.5 257.95</b>	GND CON <b>121.9 257.95</b>	CLNC DEL <b>124.05 257.95</b>



CATEGORY	A	B	C	D
S-ILS 6	SA CAT I	RA 154/14	150 DA 544	
S-ILS 6	SA CAT II	RA 114/12	100 DA 494	

### SA CATEGORY I & II ILS - SPECIAL AIRCREW & AIRCRAFT CERTIFICATION REQUIRED

ELEV 394 **D** TDZE 394

REIL Rws 24 and 31  
HIRL Rws 6-24 and 13-31

NE-4, 16 JUN 2022 to 14 JUL 2022

NE-4, 16 JUN 2022 to 14 JUL 2022