

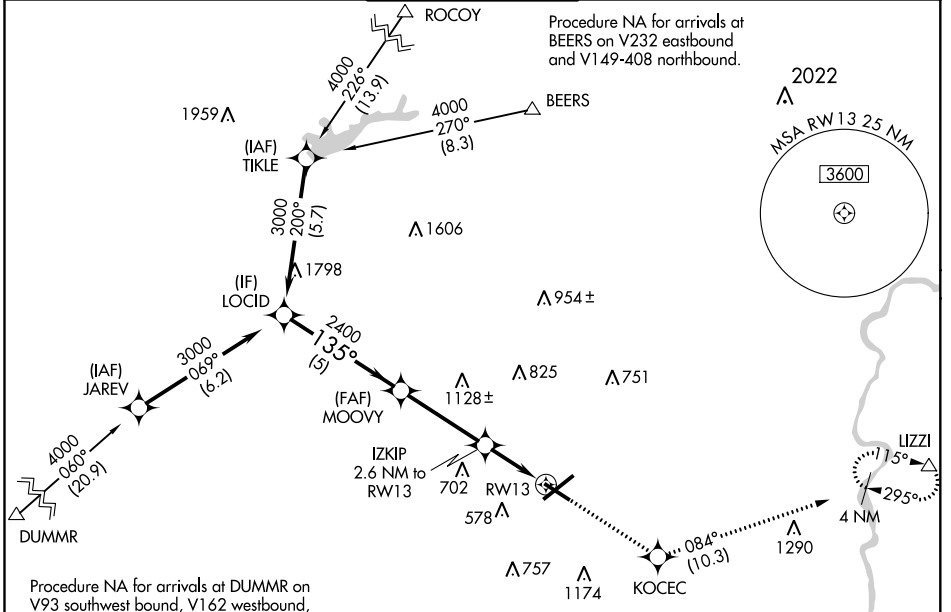
WAAS CH <b>82532</b> <b>W13A</b>	APP CRS <b>135°</b>	Rwy Idg TDZE <b>386</b> Apt Elev <b>394</b>	<b>5800</b>
--	------------------------	---	-------------

# RNAV (GPS) RWY 13

LEHIGH VALLEY INTL (ABE)

<p><b>▼</b> For uncompensated Baro-VNAV systems, LNAV/VNAV NA below -16°C (4°F) or above 54°C (130°F). DME/DME RNP-0.3 NA. For inoperative MALS, increase LNAV Cat C/D visibility to 1 1/2 mile.</p>	MALS	MISSED APPROACH: Climb to 3000 direct KOCEC and on track 084° to LIZZI and hold.

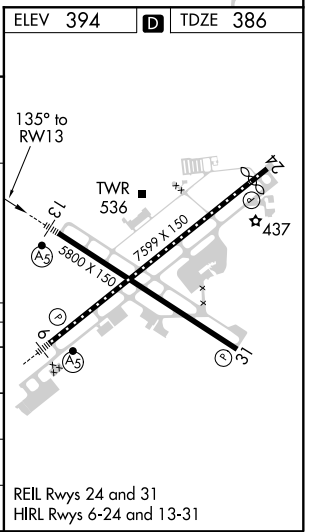
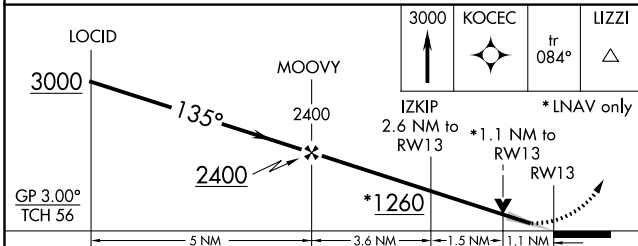
ATIS <b>126.975</b>	ALLENTOWN APP CON <b>119.65 124.45 351.8</b>	ALLENTOWN TOWER <b>120.5 257.95</b>	GND CON <b>121.9 257.95</b>	CLNC DEL <b>124.05 257.95</b>
------------------------	---	--	--------------------------------	----------------------------------



NE-4, 16 JUN 2022 to 14 JUL 2022

NE-4, 16 JUN 2022 to 14 JUL 2022

ELEV 394	<b>D</b> TDZE 386
----------	-------------------



CATEGORY	A	B	C	D
LPV DA		586-1/2	200 (200-1/2)	
LNAV/VNAV DA		700-1/2	314 (400-1/2)	
LNAV MDA	800-1/2	414 (500-1/2)	800-3/4	414 (500-3/4)
<b>C</b> CIRCLING	900-1	506 (600-1)	1180-2 1/4 786 (800-2 1/4)	1600-3 1206 (1300-3)