

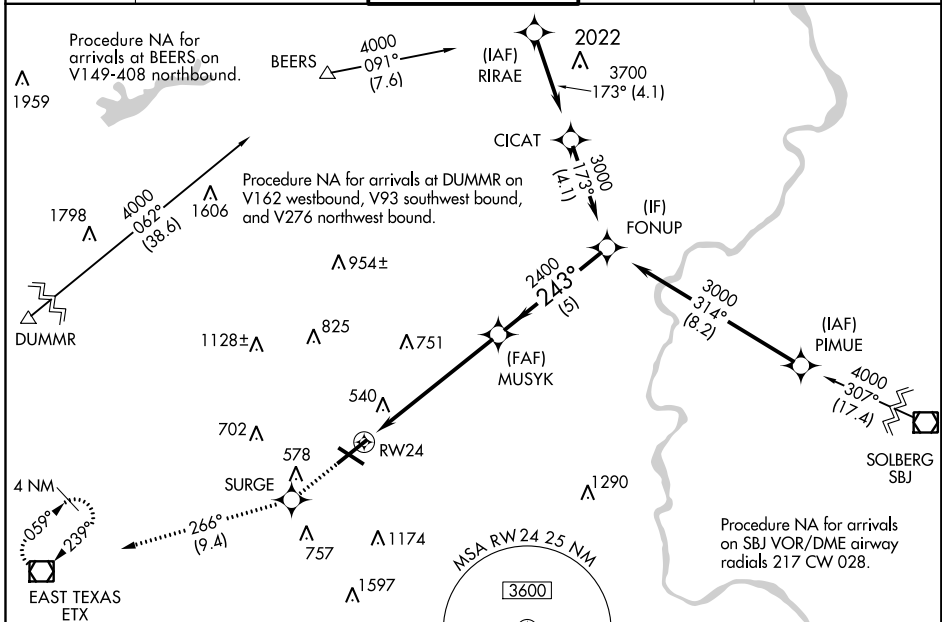
WAAS CH <b>40332</b> <b>W24A</b>	APP CRS <b>243°</b>	Rwy Idg TDZE Apt Elev	<b>7089</b> <b>387</b> <b>394</b>
--	------------------------	-----------------------------	---

# RNAV (GPS) RWY 24

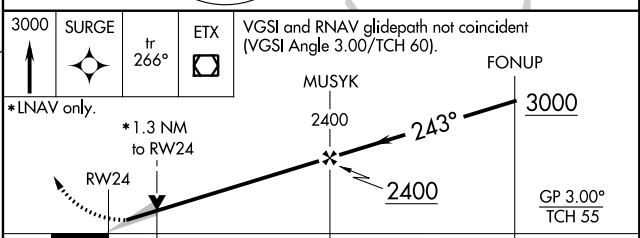
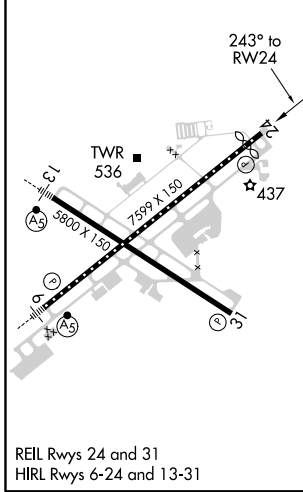
LEHIGH VALLEY INTL (ABE)

RNP APCH.	<p><b>▼</b> For uncompensated Baro-VNAV systems, LNAV/VNAV NA below -8°C (18°F) or above 54°C (130°F).</p> <p><b>▲</b></p>	MISSED APPROACH: Climb to 3000 direct SURGE and on track 266° to ETX VOR/DME and hold.
-----------	--	--

ATIS <b>126.975</b>	ALLENTOWN APP CON <b>119.65 124.45 351.8</b>	ALLENTOWN TOWER <b>120.5 257.95</b>	GND CON <b>121.9 257.95</b>	CLNC DEL <b>124.05 257.95</b>
------------------------	---	--	--------------------------------	----------------------------------



ELEV 394	<b>D</b>	TDZE 387
----------	----------	----------



CATEGORY	A	B	C	D
LPV DA		587/40	200 (200-3/4)	
LNAV/VNAV DA		783-1 1/4	396 (400-1 1/4)	
LNAV MDA	860/55	473 (500-1)	860-1 3/8	473 (500-1 3/8)
<b>C</b> CIRCLING	900-1	506 (600-1)	1180-2 1/4 786 (800-2 1/4)	1600-3 1206 (1300-3)

NE-4, 16 JUN 2022 to 14 JUL 2022

NE-4, 16 JUN 2022 to 14 JUL 2022