

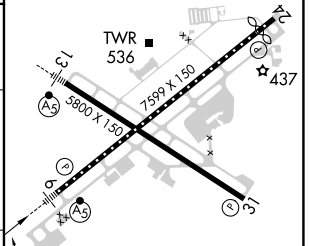
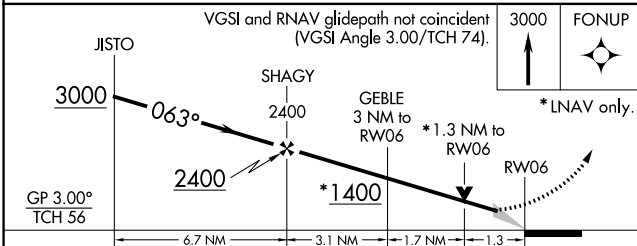
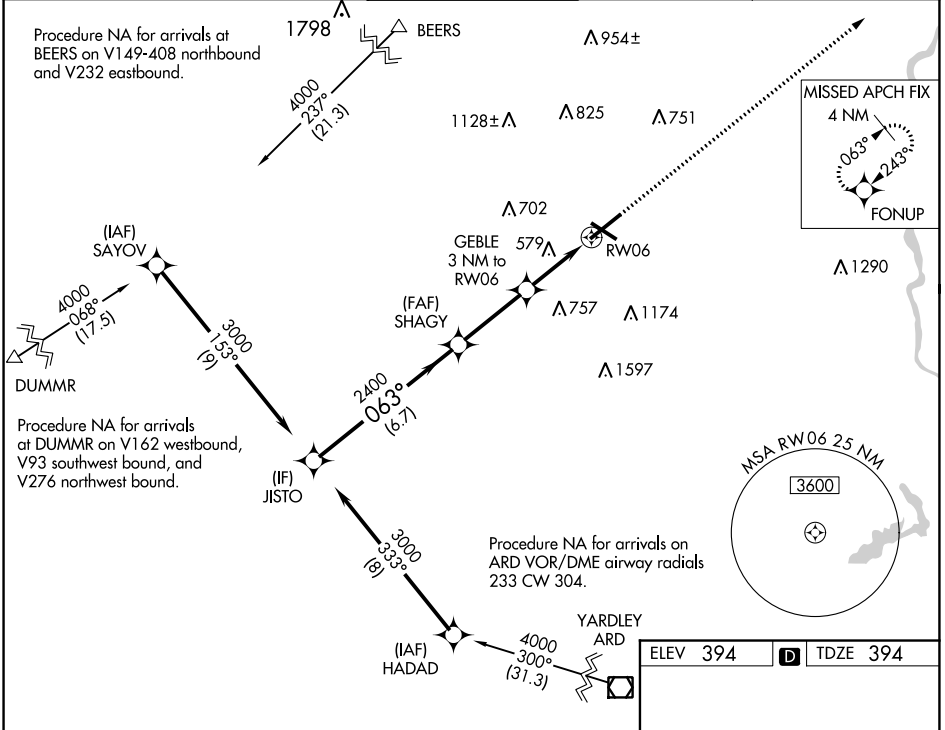
WAAS CH 69432	APP CRS 063°	Rwy Idg TDZE 394	7599
W06A		Apt Elev 394	

RNAV (GPS) RWY 6

LEHIGH VALLEY INTL (ABE)

RNP APCH.	MALSR	MISSED APPROACH: Climb to 3000 direct FONUP and hold.
<p>For uncompensated Baro-VNAV systems, LNAV/VNAV NA below -8°C (18°F) or above 54°C (130°F). For inop ALS, increase LNAV Cat C/D visibility to 1½ SM. **RVR 1800 authorized with use of FD or AP or HUD to DA.</p>		

ATIS 126.975	ALLENTOWN APP CON 119.65 124.45 351.8	ALLENTOWN TOWER 120.5 257.95	GND CON 121.9 257.95	CLNC DEL 124.05 257.95
------------------------	---	--	--------------------------------	----------------------------------



CATEGORY	A	B	C	D
LPV DA **	594/24		200 (200-½)	
LNAV/ DA VNAV	644/24		250 (300-½)	
LNAV MDA	840/24 446 (500-½)		840/45 446 (500-¾)	
CIRCLING	900-1 506 (600-1)		1180-2¼ 786 (800-2¼) 1600-3 1206 (1300-3)	

REIL Rwy 24 and 31
HIRL Rwy 6-24 and 13-31

NE-4, 16 JUN 2022 to 14 JUL 2022

NE-4, 16 JUN 2022 to 14 JUL 2022