

WAAS CH 45537 W16A	APP CRS 157°	Rwy Idg TDZE Apt Elev	5000 200 200
--	------------------------	-----------------------------	---

RNAV (GPS) RWY 16

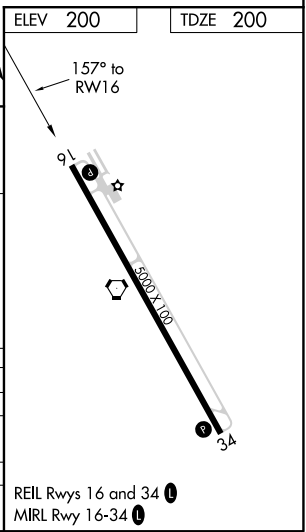
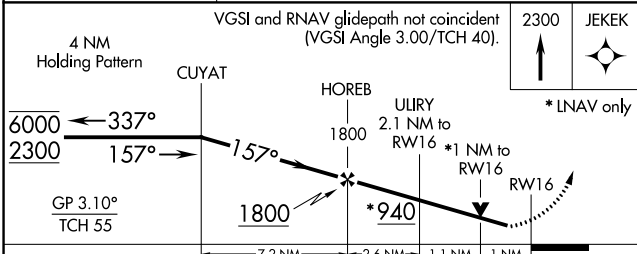
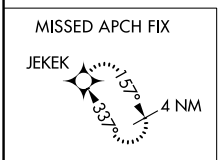
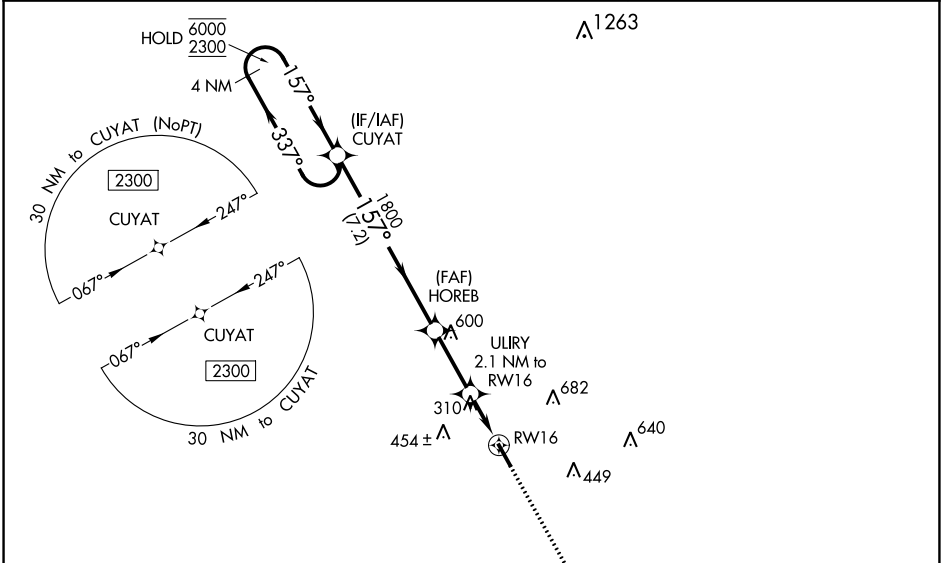
BACON COUNTY (AMG)

RNP APCH.

▼ Rwy 16 helicopter visibility reduction below 3/4 SM NA.
▲ For uncompensated Baro-VNAV systems, LNAV/VNAV NA below -4°C or above 54°C.

MISSED APPROACH: Climb to 2300 direct to JEKEK and hold.

ASOS 118.325	JACKSONVILLE CENTER 127.575 269.025	UNICOM 122.7 (CTAF) ①
------------------------	---	---------------------------------



CATEGORY	A	B	C	D
LPV DA		461-7/8	261 (300-7/8)	
LNAV/VNAV DA		468-7/8	268 (300-7/8)	
LNAV MDA		560-1	360 (400-1)	
C CIRCLING	720-1	520 (600-1)	1000-2 1/4 800 (800-2 1/4)	1000-2 1/2 800 (800-2 1/2)

REIL Rwy 16 and 34 ①
 MIRL Rwy 16-34 ①

SE-4, 16 JUN 2022 to 14 JUL 2022

SE-4, 16 JUN 2022 to 14 JUL 2022