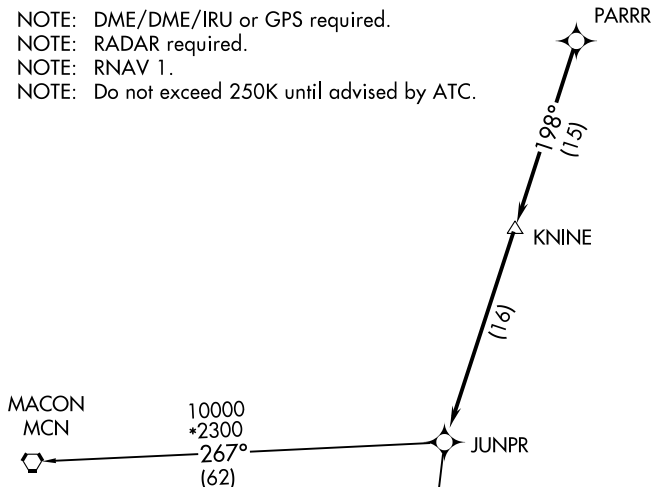


JUNPR FIVE DEPARTURE (RNAV)

**TOP ALTITUDE:
ASSIGNED BY ATC**

AUGUSTA DEP CON ★
126.8 270.3
CLNC DEL
118.65
AUGUSTA TOWER ★
118.7 (CTAF) 239.3

NOTE: DME/DME/IRU or GPS required.
NOTE: RADAR required.
NOTE: RNAV 1.
NOTE: Do not exceed 250K until advised by ATC.



SE-4, 16 JUN 2022 to 14 JUL 2022

SE-4, 16 JUN 2022 to 14 JUL 2022

TAKEOFF MINIMUMS

- Rwy 8: Standard with minimum climb of 394' per NM to 2500.
- Rwy 17: Standard with minimum climb of 265' per NM to 2400.
- Rwy 26: 300-1¾ or standard with minimum climb of 312' per NM to 2000.
- Rwy 35: Standard with minimum climb of 302' per NM to 2500.

▼ DEPARTURE ROUTE DESCRIPTION

TAKEOFF RUNWAYS 8, 17, 26, 35:
Climb heading assigned by ATC for vectors to PARRR, then on depicted route to JUNPR, thence. . . .

. . . .maintain altitude assigned by ATC.
Expect clearance to filed altitude/flight level within 10 minutes after departure.

ALMA TRANSITION (JUNPR5.AMG)
MACON TRANSITION (JUNPR5.MCN)

NOTE: Chart not to scale.

JUNPR FIVE DEPARTURE (RNAV)