

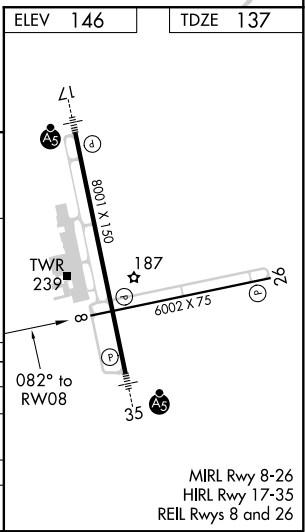
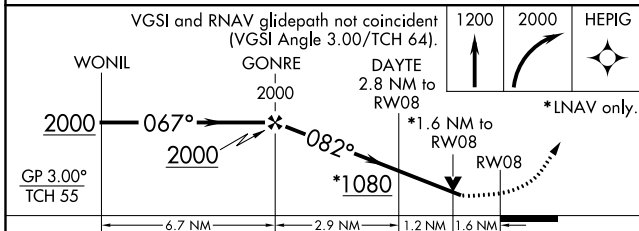
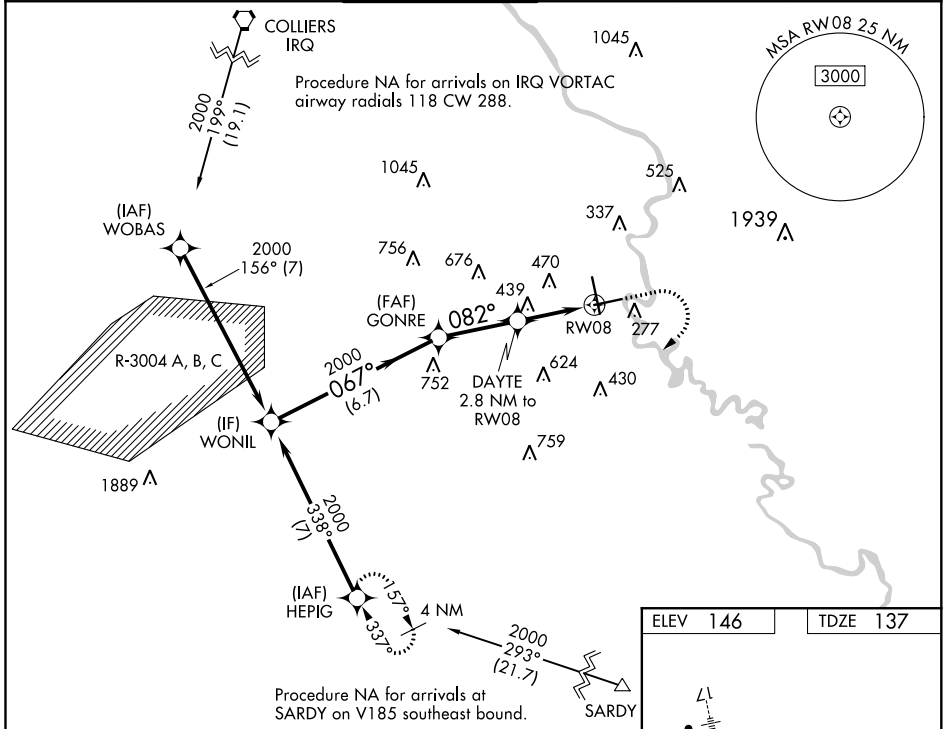
WAAS CH <b>90328</b> <b>W08A</b>	APP CRS <b>082°</b>	Rwy Idg TDZE Apt Elev	<b>6002</b> <b>137</b> <b>146</b>
--	------------------------	-----------------------------	---

# RNAV (GPS) Z RWY 8

AUGUSTA RGNL AT BUSH FLD (AGS)

RNP APCH.		<p><b>▽</b> Rwy 8 helicopter visibility reduction below 3/4 SM NA. For uncompensated Baro-VNAV systems, LNAV/VNAV NA below -7°C or above 54°C.</p> <p><b>▲</b> MISSED APPROACH: Climb to 1200 then climbing right turn to 2000 direct HEPIG and hold.</p>	
-----------	--	---	--

ATIS <b>132.75</b>	AUGUSTA APP CON ★ <b>126.8 270.3</b>	AUGUSTA TOWER ★ <b>118.7 (CTAF) 239.3</b>	GND CON <b>121.9 348.6</b>	CLNC DEL <b>118.65</b>	UNICOM <b>122.95</b>
-----------------------	---	--	-------------------------------	---------------------------	-------------------------



CATEGORY	A	B	C	D
LPV DA		669-1½	532 (600-1½)	
LNAV/VNAV DA		693-1⅝	556 (600-1⅝)	
LNAV MDA	700-1	563 (600-1)	700-1⅝	563 (600-1⅝)
<b>C</b> CIRCLING	740-1 594 (600-1)	780-1 634 (700-1)	780-1¾ 634 (700-1¾)	940-2½ 794 (800-2½)

SE-4, 16 JUN 2022 to 14 JUL 2022

SE-4, 16 JUN 2022 to 14 JUL 2022