

UNARM SIX ARRIVAL
(UNARM, UNARM6) 03JAN19

(UNARM, UNARM6) 22139
UNARM SIX ARRIVAL

AL-78 (FAA)

CHARLOTTE, NORTH CAROLINA

CHARLOTTE APP CON
135.6 377.15
CLT D-ATIS ARR
121.15

SPARTANBURG
115.7 SPA
Chan 104

SHELBY-CLEVELAND
COUNTY RGNL

LINCOLN-TOWN
LINCOLN COUNTY
RGNL

CHARLOTTE/
DOUGLAS
INTL

MID-CAROLINA
RGNL

CONCORD-PADGETT
RGNL

STANLY
COUNTY

CHARLOTTE
115.0 CLT
Chan 97
N35°11.42'-W80°57.11'

ROCK HILL/YORK
COUNTY/BRYANT
FLD

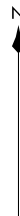
CHARLOTTE/MONROE
EXEC

ANSON
COUNTY/
JEFF CLOUD
FLD

JAARS-TOWNSEND

CHESTER CATAWBA
RGNL

LANCASTER COUNTY-
MC WHIRTER FLD



ATLANTA
116.9 ATL
Chan 116
N33°37.74'-W84°26.10'

L-18, H-9-12

ATHENS
109.6 AHN
Chan 33

GREENWOOD
115.5 GRD
Chan 102
N34°15.09'-W82°09.25'

UNARM
N34°39.29'-W81°38.56'
CHARLOTTE/DOUGLAS INTL
VERTICAL NAVIGATION
PLANNING INFORMATION
TURBOJET: Expect 11000 250K
TURBOPROP/PROP: Expect 7000

BIFFS
N34°28.23'
W81°52.65'

COLUMBIA
114.7 CAE
Chan 94

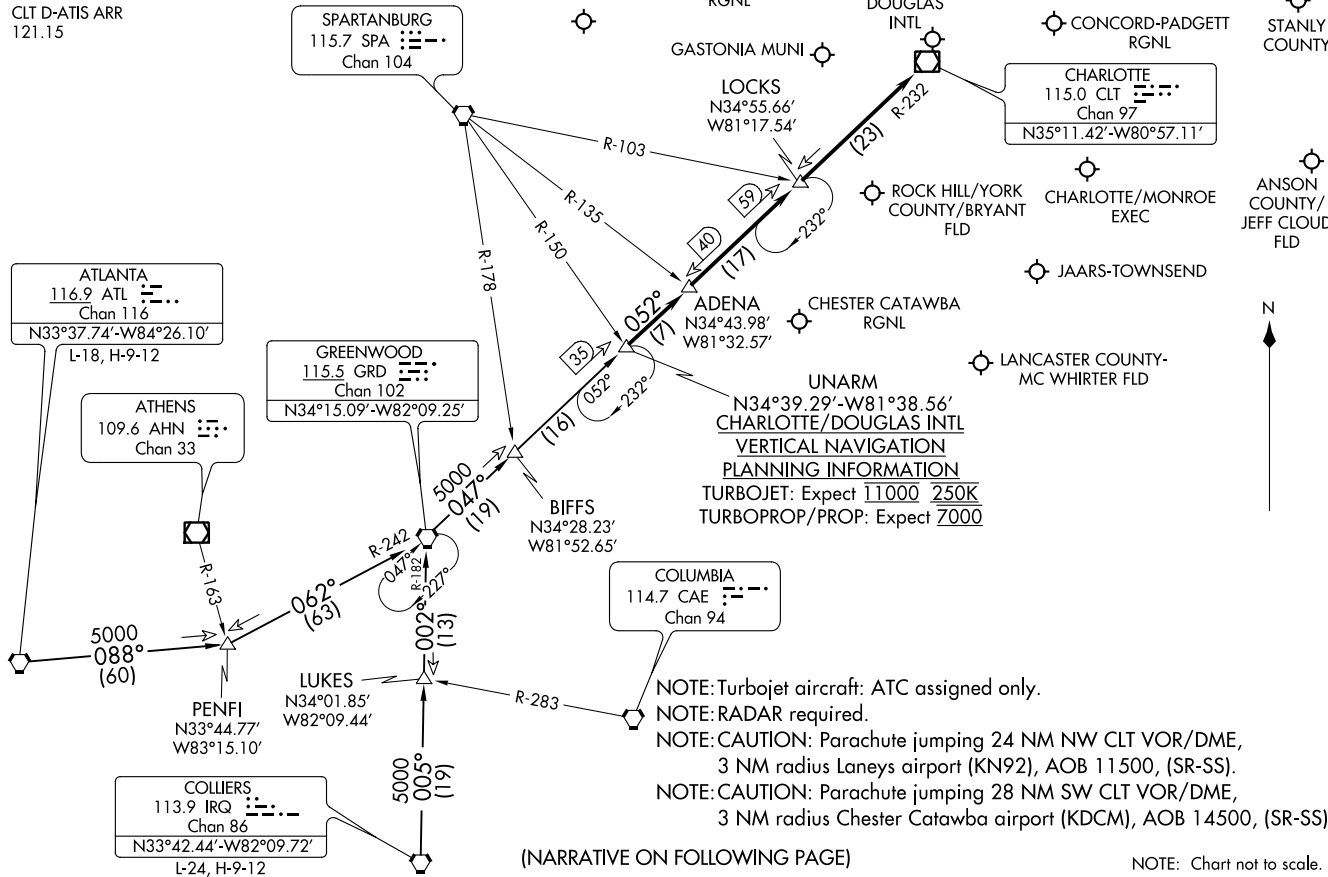
NOTE: Turbojet aircraft: ATC assigned only.
NOTE: RADAR required.

NOTE: CAUTION: Parachute jumping 24 NM NW CLT VOR/DME,
3 NM radius Laney airport (KN92), AOB 11500, (SR-SS).
NOTE: CAUTION: Parachute jumping 28 NM SW CLT VOR/DME,
3 NM radius Chester Catawba airport (KDCM), AOB 14500, (SR-SS).

(NARRATIVE ON FOLLOWING PAGE)

NOTE: Chart not to scale.

CHARLOTTE, NORTH CAROLINA



ARRIVAL ROUTE DESCRIPTION

ATLANTA TRANSITION (ATL.UNARM6): From over ATL VORTAC on ATL R-088 to PENFI, then on GRD R-242 to GRD VORTAC, then on GRD R-047 to UNARM INT. Thence

COLLIERS TRANSITION (IRQ.UNARM6): From over IRQ VORTAC on IRQ R-005 to LUKES, then on GRD R-182 to GRD VORTAC, then on GRD R-047 to UNARM INT. Thence

. . . . from UNARM on CLT R-232 to ADENA, then on CLT R-232 to LOCKS, then on CLT R-232 to CLT VOR/DME. Expect RADAR vectors to destination airport or final approach course prior to CLT VOR/DME.

SE-2, 16 JUN 2022 to 14 JUL 2022

SE-2, 16 JUN 2022 to 14 JUL 2022