

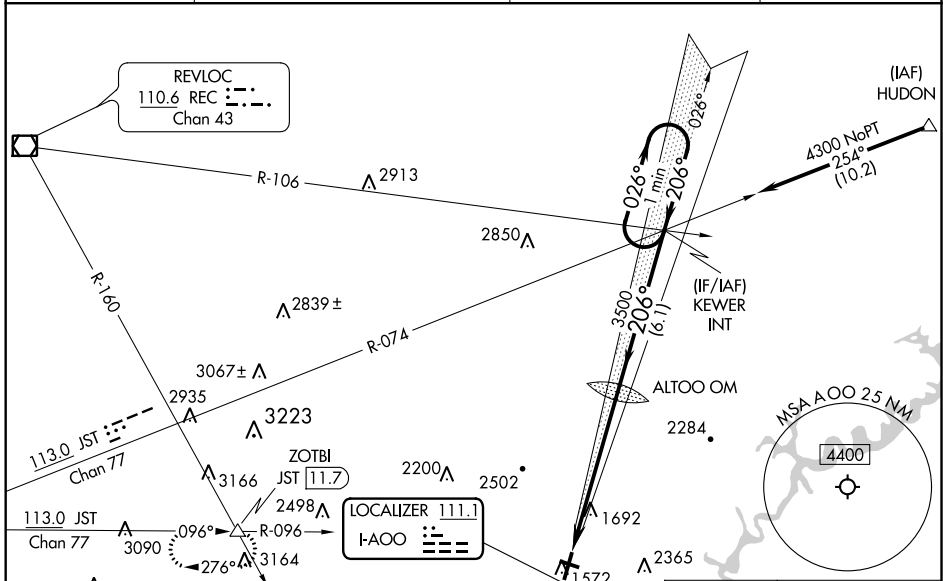
LOC I-AOO 111.1	APP CRS 206°	Rwy ldg TDZE Apt Elev	5465 1486 1503
---------------------------	------------------------	-----------------------------	---

ILS or LOC RWY 21

ALTOONA/BLAIR COUNTY (A00)

<p>▽ ▲ Circling NA for Cats C, D northwest of Rwy 12 and 21. For inoperative ALS increase S-LOC 21 visibility Cats C and D to 2½ miles. Circling Rwy 3, 12, 30 NA at night.</p>	<p>MALSR </p>	MISSED APPROACH: Climb to 2100, then climbing right turn to 5000 on heading 295° and JST R-096 to ZOTBI INT/JST 11.7 DME and hold, continue climb-in-hold to 5000.

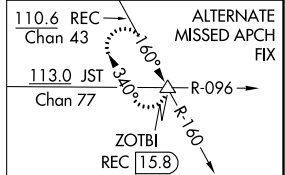
ASOS 127.125	JOHNSTOWN APP CON * 121.2 299.2	CTAF 123.60	UNICOM 123.0
------------------------	---	-----------------------	------------------------



NE-4, 16 JUN 2022 to 14 JUL 2022

NE-4, 16 JUN 2022 to 14 JUL 2022

ELEV 1503	D	TDZE 1486
-----------	----------	-----------



2100	5000	JST R-096	ZOTBI INT	KEWER INT	One Minute Holding Pattern
------	------	-----------	-----------	-----------	----------------------------

CATEGORY	A	B	C	D
S-ILS 21		1686-1/2	200 (200-1/2)	
S-LOC 21	2240-1/2 754 (800-1/2)	2240-3/4 754 (800-3/4)	2240-1 3/4	754 (800-1 3/4)
C CIRCLING	2240-1 737 (800-1)	2240-1 1/4 737 (800-1 1/4)	2800-3 1297 (1300-3)	2840-3 1337 (1400-3)