

WAAS CH <b>90105</b> <b>W21A</b>	APP CRS <b>206°</b>	Rwy Idg TDZE <b>1486</b> Apt Elev <b>1503</b>
--	------------------------	---

# RNAV (GPS) RWY 21

ALTOONA/BLAIR COUNTY (A00)

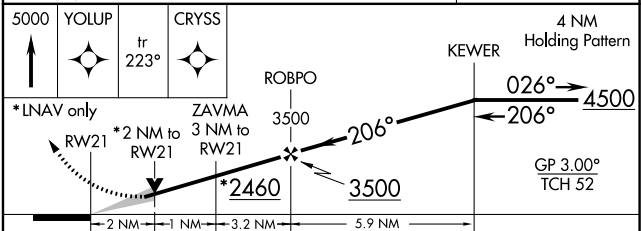
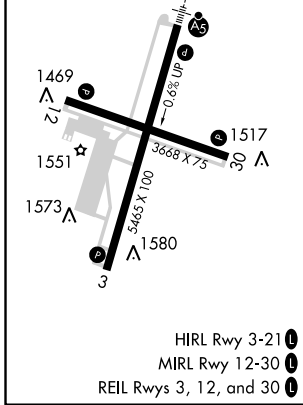
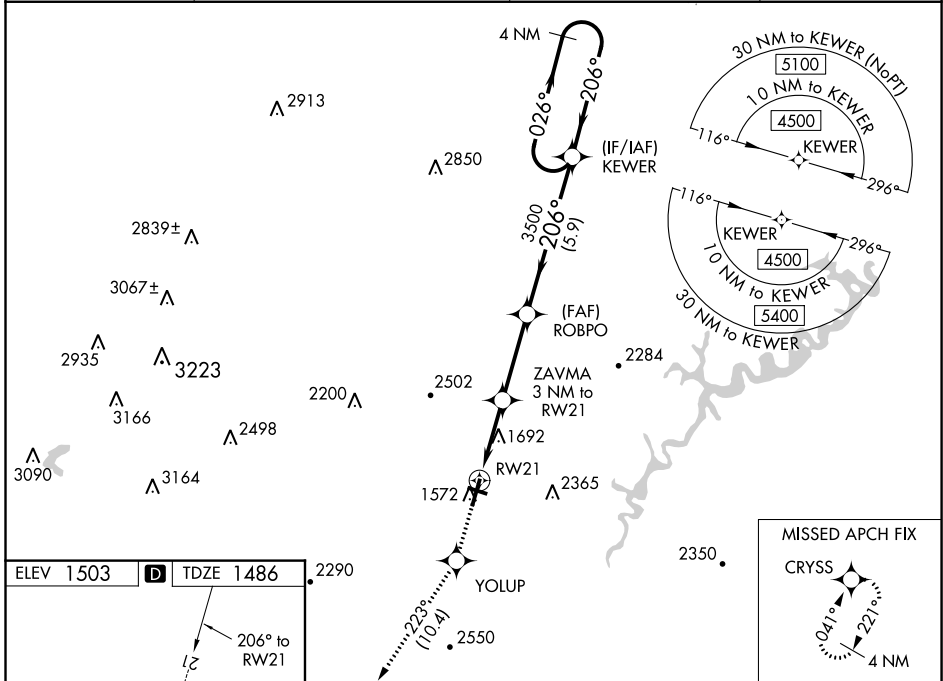
**RNP APCH.**

▼ Baro-VNAV NA when using Bedford County altimeter setting. For uncompensated Baro-VNAV systems, LNAV/VNAV NA below -17°C or above 54°C. For inoperative ALS, increase LPV visibility all Cats to 1½ SM. For inoperative ALS when using Bedford County altimeter setting, increase LPV and LNAV/VNAV all Cats visibility to 2 SM and increase LNAV Cats C/D visibility to 2 ½ SM. When local altimeter setting not received, use Bedford County altimeter setting; increase all DA 84 feet and all MDA 100 feet. Increase all LPV and LNAV/VNAV visibilities ¾ SM, LNAV Cats B, C and D and Circling Cat A ¼ SM. Circling Rwy 3, 12, 30 NA at night.

MALSRL

MISSED APPROACH: Climb to 5000 direct YOLUP and on track 223° to CRYSS and hold, continue Climb-in-hold to 5000.

ASOS <b>127.125</b>	JOHNSTOWN APP CON * <b>121.2 299.2</b>	CTAF <b>123.60</b>	UNICOM <b>123.0</b>
------------------------	---	-----------------------	------------------------



CATEGORY	A	B	C	D
LPV DA		1977-1½	491 (500-1½)	
LNAV/VNAV DA		1999-1¼	513 (500-1¼)	
LNAV MDA	2160-½	674 (700-½)	2160-½	674 (700-½)
<b>C</b> CIRCLING	2240-1 737 (800-1)	2240-1¼ 737 (800-1¼)	2800-3 1297 (1300-3)	2840-3 1337 (1400-3)

NE-4, 16 JUN 2022 to 14 JUL 2022

NE-4, 16 JUN 2022 to 14 JUL 2022