

WAAS CH 82030 W03B	APP CRS 041°	Rwy Idg TDZE Apt Elev	5465 1503 1503
--	------------------------	-----------------------------	---

RNAV (GPS) Y RWY 3

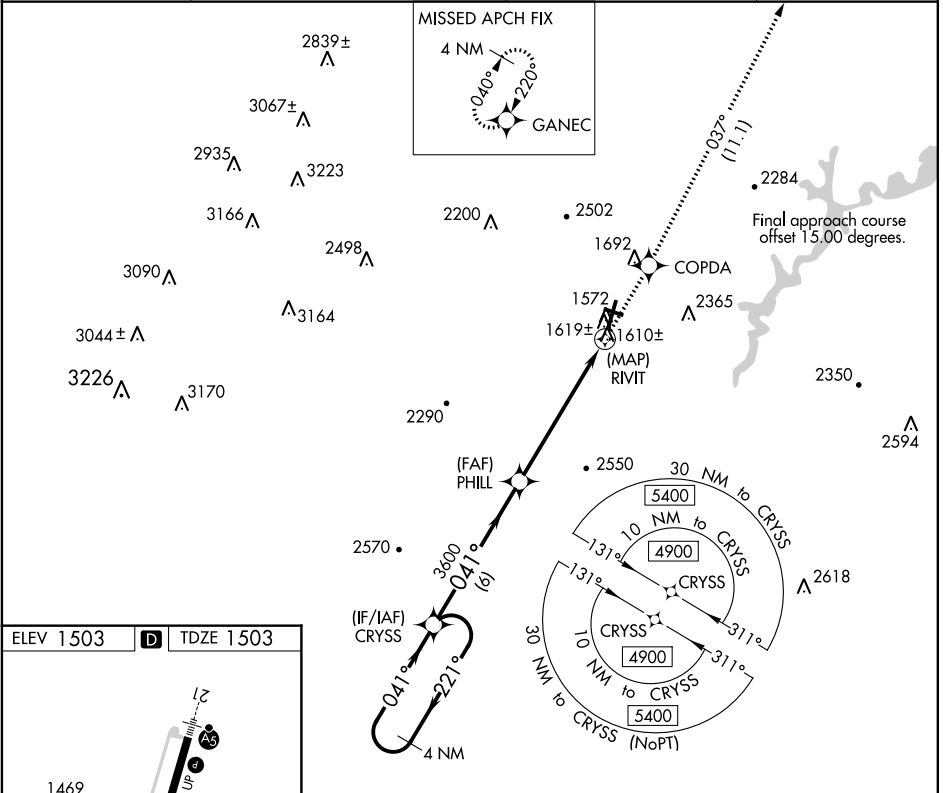
ALTOONA/BLAIR COUNTY (A00)

RNP APCH:

▼ When local altimeter setting not received, use Bedford County altimeter setting, increase all MDA 100 feet. Increase LNAV and LP Cat C/D visibilities $\frac{3}{8}$ SM and Circling Cat A $\frac{1}{4}$ SM.
 ▲ Rwy 3, helicopter visibility reduction below $\frac{3}{4}$ SM NA. Circling NA to Rwy's 12 and 30. VDP NA when using Bedford County altimeter setting.

MISSED APPROACH: Climb to 5000 direct COPDA on track 037° to GANEC and hold, continue climb-in-hold to 5000.

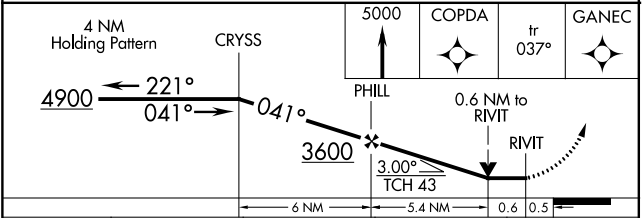
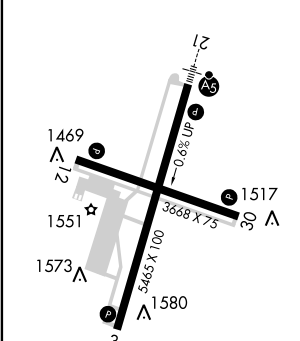
ASOS 127.125	JOHNSTOWN APP CON ★ 121.2 299.2	CTAF 123.6	UNICOM 123.0
------------------------	---	----------------------	------------------------



NE-4, 16 JUN 2022 to 14 JUL 2022

NE-4, 16 JUN 2022 to 14 JUL 2022

ELEV 1503	D	TDZE 1503
-----------	----------	-----------



CATEGORY	A	B	C	D
LP MDA		1860-1	357 (400-1)	
LNAV MDA		1880-1	377 (400-1)	
CIRCLING	2240-1	2240-1 $\frac{1}{4}$	2800-3	2840-3
	737 (800-1)	737 (800-1 $\frac{1}{4}$)	1297 (1300-3)	1357 (1400-3)