

WAAS CH 82529 W03A	APP CRS 026°	Rwy Idg TDZE Apt Elev	5465 1503 1503
--	------------------------	-----------------------------	---

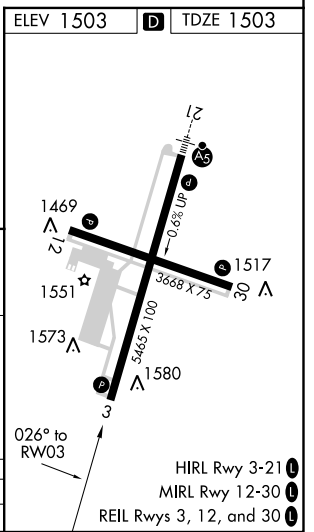
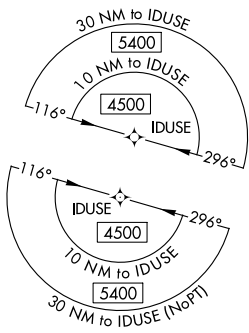
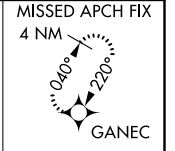
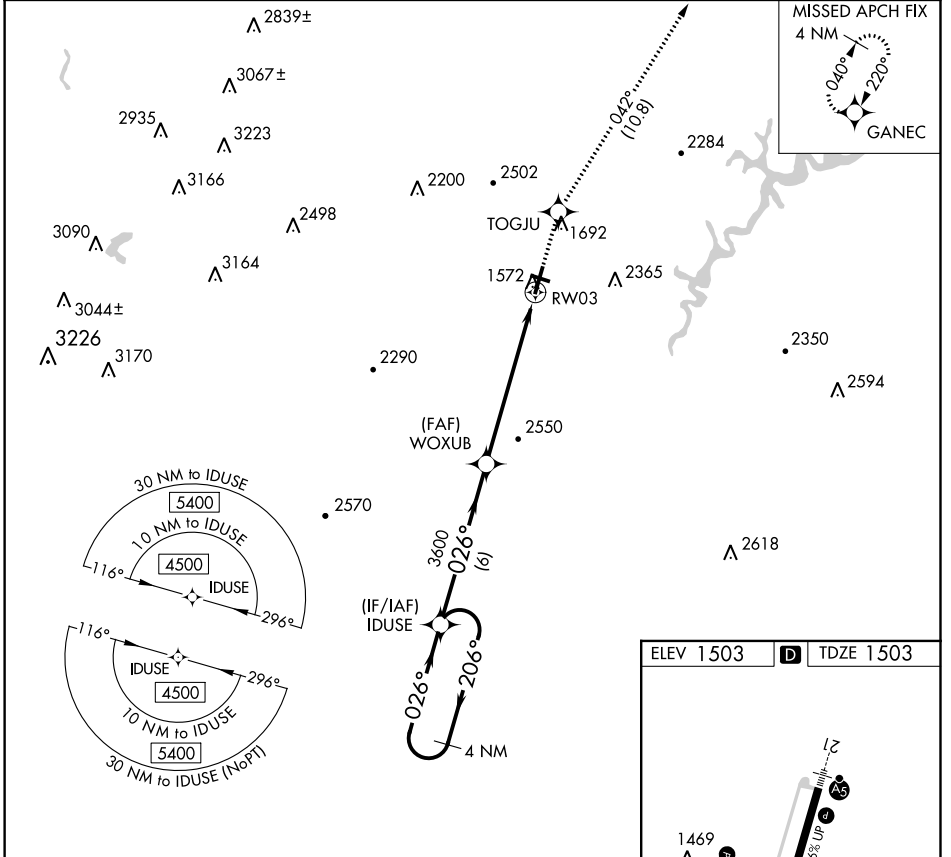
RNAV (GPS) Z RWY 3

ALTOONA/BLAIR COUNTY (A00)

▼ Rwy 3 helicopter visibility reduction below 3/4 SM NA. DME/DME RNP-0.3 NA. When local altimeter setting not received, use Bedford County altimeter setting and increase all DA 84 feet, and increase all visibilities 3/8 mile.

▲ NA MISSED APPROACH: Climb to 5000 direct TOGJU and on track 042° to GANEC and hold, continue climb-in-hold to 5000.

ASOS 127.125	JOHNSTOWN APP CON * 121.2 299.2	CTAF 123.60	UNICOM 123.0
------------------------	---	-----------------------	------------------------



VGSI and RNAV glidepath not coincident (VGSI Angle 3.00/TCH 43).

4 NM Holding Pattern	IDUSE	WOXUB	TOGJU	GANEC
4500	3600	1692	2284	5000
GP 3.00° TCH 55	3600	1692	2284	5000
	6 NM	6.4 NM		
CATEGORY	A	B	C	D
LPV DA		1828-1	325 (400-1)	

NE-4, 16 JUN 2022 to 14 JUL 2022

NE-4, 16 JUN 2022 to 14 JUL 2022