

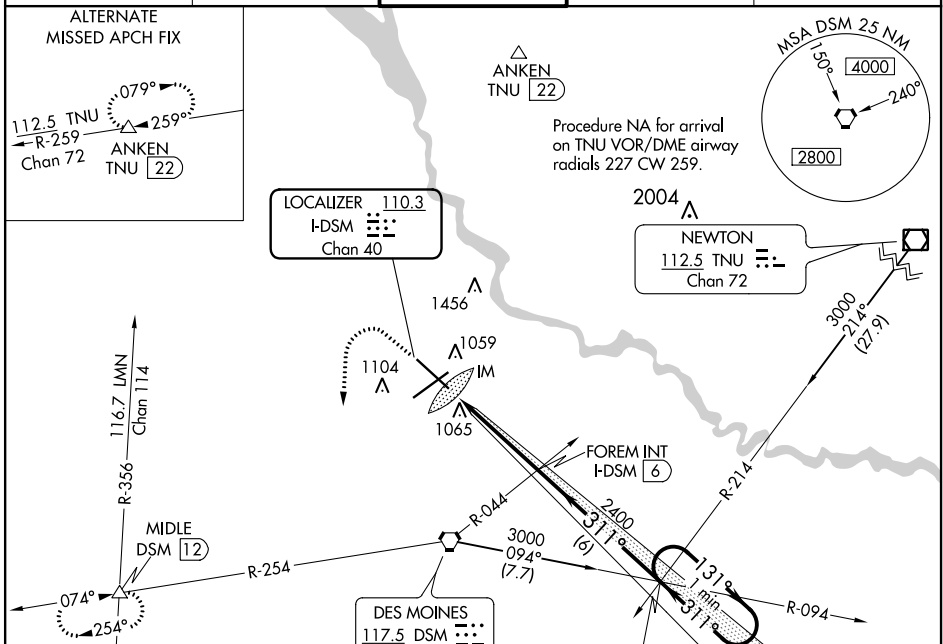
LOC/DME I-DSM 110.3 Chan 40	APP CRS 311°	Rwy Idg TDZE Apt Elev	9001 958 958
--	------------------------	-----------------------------	---

ILS or LOC RWY 31

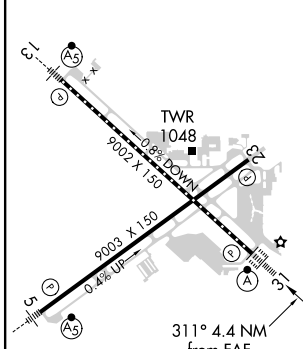
DES MOINES INTL (DSM)

<p>For inop ALS, increase S-ILS 31 Cat E visibility to RVR 4000 and S-LOC 31 Cat E visibility to RVR 6000.</p>	<p>ALSIF-2</p>	<p>MISSED APPROACH: Climb to 1600 then climbing left turn to 3000 on heading 180° and on DSM VORTAC R-254 to MIDDLE INT/12 DME and hold.</p>
	<p>Procedure NA for arrival on TNU VOR/DME airway radials 227 CW 259.</p>	

ATIS 119.55	DES MOINES APP CON 123.9 307.15	DES MOINES TOWER 118.3 257.8	GND CON 121.9 348.6	CLNC DEL 134.15 317.55
-----------------------	---	--	-------------------------------	----------------------------------

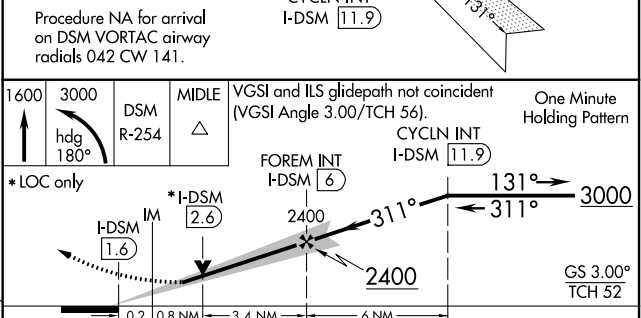


ELEV 958	D	TDZE 958
----------	----------	----------



REIL Rwy 23
TDZ/CL Rwy 31
HIRL Rwys 13-31 and 5-23
FAF to MAP 4.4 NM

Knots	60	90	120	150	180
Min:Sec	4:24	2:56	2:12	1:46	1:28



CATEGORY	A	B	C	D	E
S-ILS 31	1158/18 200 (200-½)				
S-LOC 31	1340/24	382 (400-½)	1340/35 382 (400-¾)		
C CIRCLING	1420-1	462 (500-1)	1600-1½	1760-2½	1760-2¾ 642 (700-1½) 802 (900-2½) 802 (900-2¾)

NC-3, 16 JUN 2022 to 14 JUL 2022

NC-3, 16 JUN 2022 to 14 JUL 2022