


WAAS CH <b>72602</b> <b>W13A</b>	APP CRS <b>131°</b>	Rwy Idg <b>9001</b> TDZE <b>922</b> Apt Elev <b>958</b>
--	------------------------	---

# RNAV (GPS) RWY 13

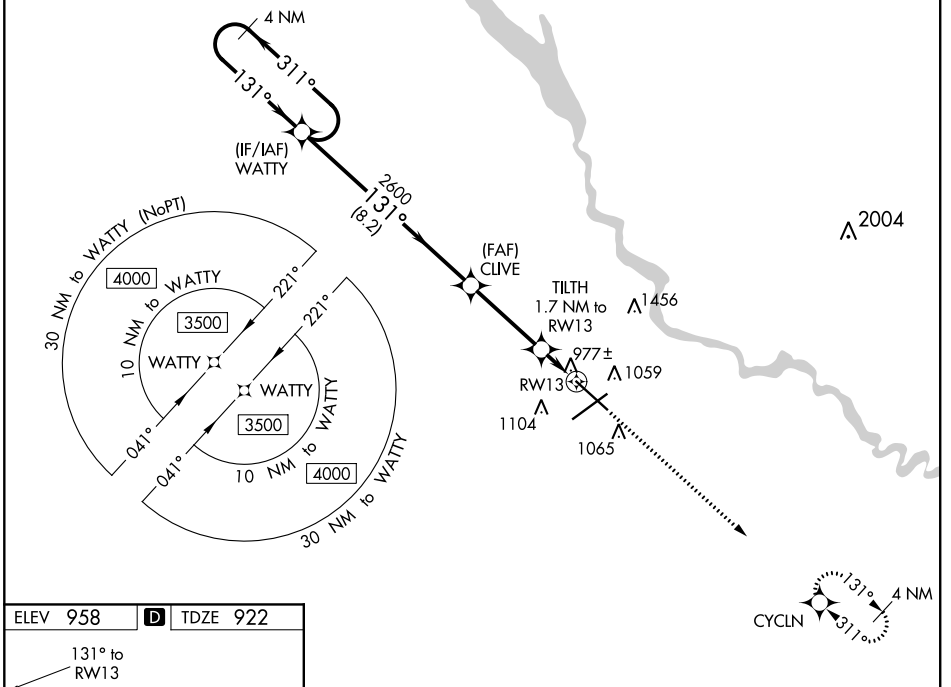
DES MOINES INTL (DSM)

**⚠** For uncompensated Baro-VNAV systems, LNAV/VNAV NA below -19°C (-2°F) or above 54°C (130°F). DME/DME RNP-0.3 NA.  
**⚠** For inop ALS, increase LNAV/VNAV all Cats visibility to RVR 4000 and LNAV Cats C and D visibility to RVR 4500.  
 # RVR 1800 authorized with use of FD or AP or HUD to DA.

MALSR 

MISSED APPROACH: Climb to 3000 direct CYCLN and hold.

ATIS <b>119.55</b>	DES MOINES APP CON <b>123.9 307.15</b>	DES MOINES TOWER <b>118.3 257.8</b>	GND CON <b>121.9 348.6</b>	CLNC DEL <b>134.15 317.55</b>
-----------------------	---	--	-------------------------------	----------------------------------



NC-3, 16 JUN 2022 to 14 JUL 2022

NC-3, 16 JUN 2022 to 14 JUL 2022

ELEV 958 **D** TDZE 922

4 NM Holding Pattern

GP 3.00° TCH 56

REIL Rwy 23  
TDZ/CL Rwy 31  
HIRL Rws 13-31 and 5-23

	WATTY	CLIVE	TILTH	CYCLN
	4 NM Holding Pattern		1.7 NM to RWY 13	3000 CYCLN
	3500 ← 311°	2600	* 0.9 NM to RWY 13	* LNAV only
	→ 131°	→ 131°		
		* 1500		
	8.2 NM	3.4 NM	0.8 NM	0.9 NM
CATEGORY	A	B	C	D
LPV DA#		1122/24	200 (200-½)	
LNAV/VNAV DA		1172/24	250 (300-½)	
LNAV MDA		1240/24	318 (300-½)	
<b>C</b> CIRCLING	1420-1	462 (500-1)	1600-1¾ 642 (700-1¾)	1760-2½ 802 (900-2½)