

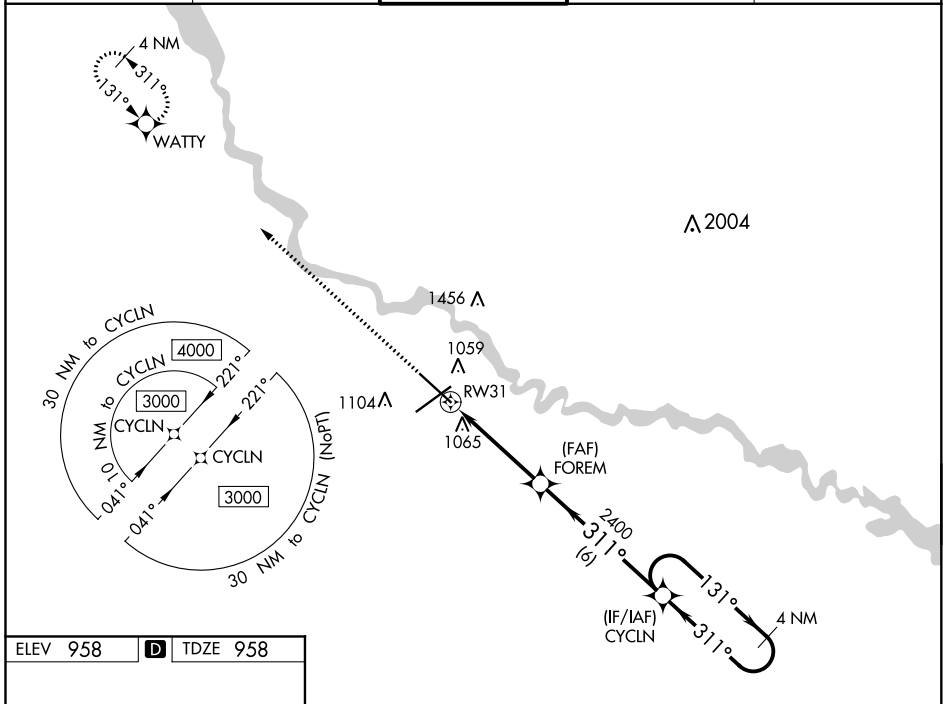
WAAS CH <b>78002</b> <b>W31A</b>	APP CRS <b>311°</b>	Rwy Idg TDZE <b>958</b> Apt Elev <b>958</b>	<b>9001</b>
--	------------------------	---	-------------

# RNAV (GPS) RWY 31

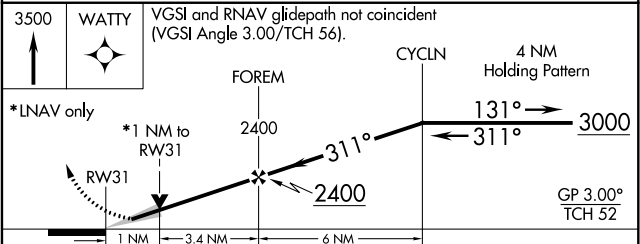
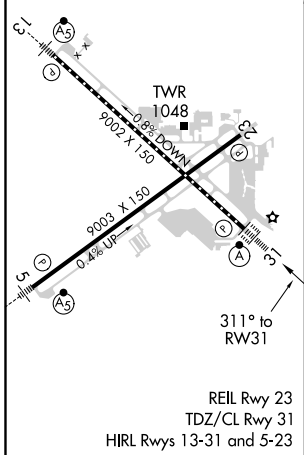
DES MOINES INTL (DSM)

<p>For uncompensated Baro-VNAV systems, LNAV/VNAV NA below -20°C (-4°F) or above 54°C (130°F). DME/DME RNP-0.3 NA. For inop ALS, increase LNAV Cats C/D visibility to RVR 5500.</p>	ALSF-2	MISSED APPROACH: Climb to 3500 direct WATTY and hold.

ATIS <b>119.55</b>	DES MOINES APP CON <b>123.9 307.15</b>	<b>DES MOINES TOWER</b> <b>118.3 257.8</b>	GND CON <b>121.9 348.6</b>	CLNC DEL <b>134.15 317.55</b>
-----------------------	---	---	-------------------------------	----------------------------------



ELEV 958	<b>D</b>	TDZE 958
----------	----------	----------



CATEGORY	A	B	C	D
LPV DA		1158/18	200 (200-½)	
LNAV/VNAV DA		1354/35	396 (400-⅝)	
LNAV MDA	1320/24	362 (400-½)	1320/35	362 (400-⅝)
<b>C</b> CIRCLING	1420-1	462 (500-1)	1600-1¾ 642 (700-1¾)	1760-2½ 802 (900-2½)

NC-3, 16 JUN 2022 to 14 JUL 2022

NC-3, 16 JUN 2022 to 14 JUL 2022