

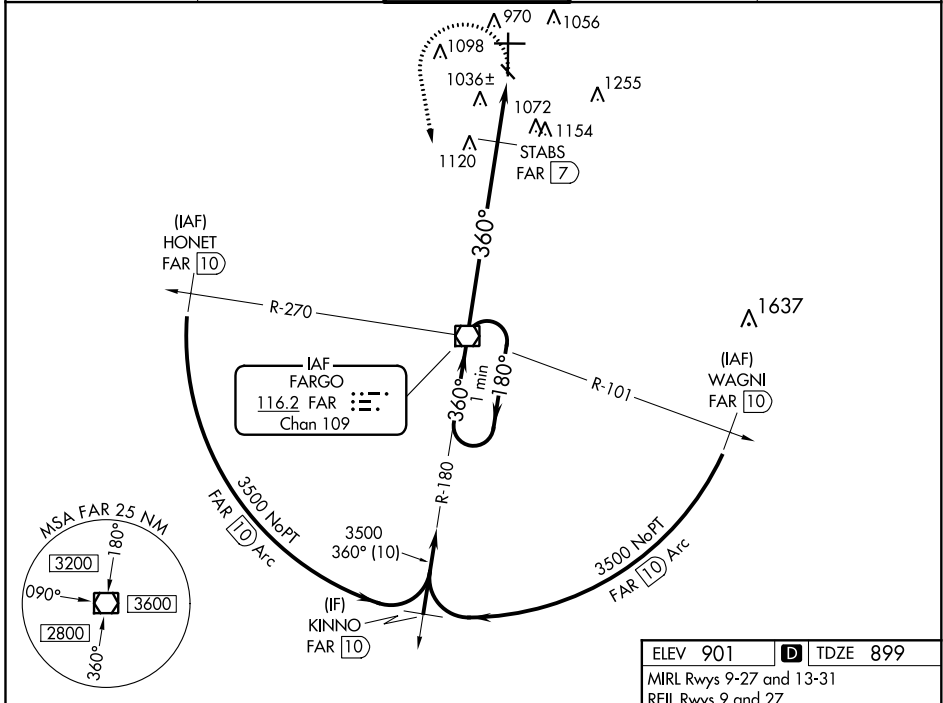
VOR/DME FAR 116.2 Chan 109	APP CRS 360°	Rwy Idg 9001 TDZE 899 Apt Elev 901
--	------------------------	---

VOR RWY 36

HECTOR INTL (FAR)

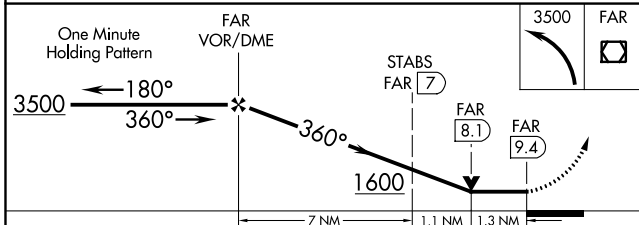
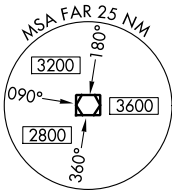
For inop MALSRS, increase S-36 Cat E visibility to 2½ miles. STABS Fix Minimums: For inop MALSRS, increase S-36 Cat E visibility to 1¾ mile.		MISSED APPROACH: Climbing left turn to 3500 direct FAR VOR/DME and hold.

ATIS 124.5 379.2	FARGO APP CON 120.4 377.15	FARGO TOWER 133.8 290.4	GND CON 121.9 348.6	CINC DEL 121.9 348.6
----------------------------	--------------------------------------	-----------------------------------	-------------------------------	--------------------------------



NC-1, 16 JUN 2022 to 14 JUL 2022

NC-1, 16 JUN 2022 to 14 JUL 2022



ELEV 901	TDZE 899
MIRL Rwy 9-27 and 13-31 REIL Rwy 9 and 27 HIRL Rwy 18-36 81	
TWR 1006 36 37 38 39 40 41 42 43 44 45 46 47 48 49 50 51 52 53 54 55 56 57 58 59 60 61 62 63 64 65 66 67 68 69 70 71 72 73 74 75 76 77 78 79 80 81 82 83 84 85 86 87 88 89 90 91 92 93 94 95 96 97 98 99 100	
360° 9.4 NM from FAF FAF to MAP 9.4 NM	
Knots	60 90 120 150 180
Min:Sec	9:24 6:16 4:42 3:46 3:08

CATEGORY	A	B	C	D	E
S-36	1600/24	701 (700-½)	1600-1½ 701 (700-1½)	1600-1¾ 701 (700-1¾)	1600-2 701 (700-2)
CIRCLING	1600-1	699 (700-1)	1600-2 699 (700-2)	1620-2¼ 719 (700-2¼)	1620-2½ 719 (700-2½)
STABS FIX MINIMUMS					
S-36	1380/24	481 (500-½)	1380/40 481 (500-¾)	1380/50 481 (500-1)	1380/60 481 (500-1½)
CIRCLING	1380-1	479 (500-1)	1520-1¾ 619 (700-1¾)	1620-2¼ 719 (800-2¼)	1620-2½ 719 (800-2½)