

RNAV (GPS) RWY 36

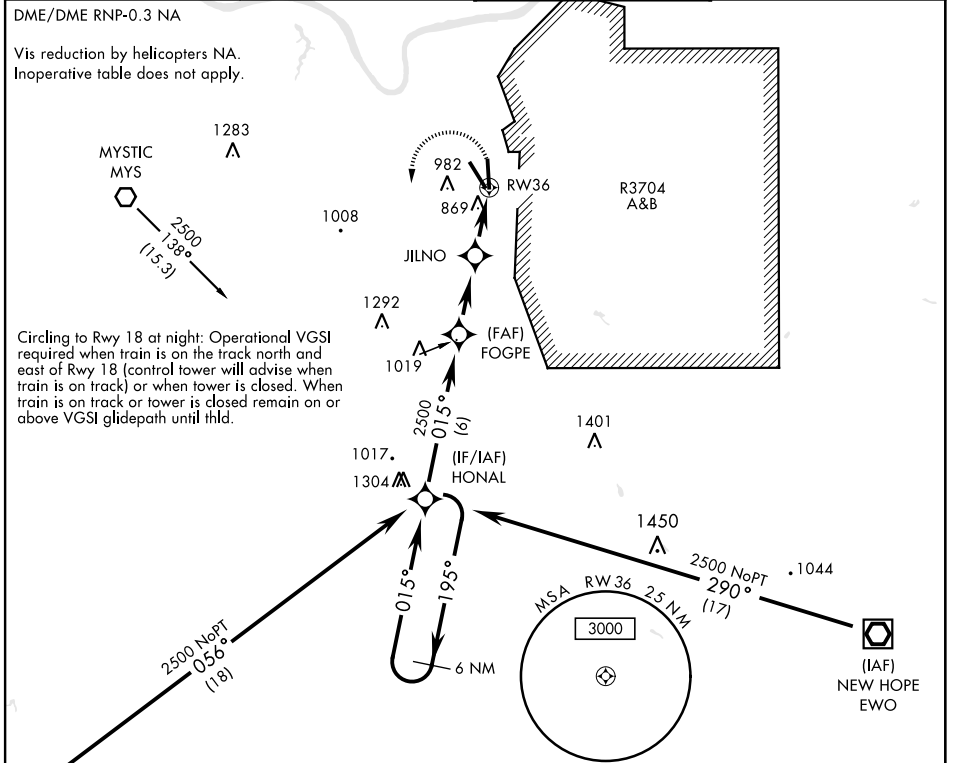
APCH CRS	Rwy Idg	5184
015°	TDZE	740
	Arprt Elev	754

AL-151 [USA]

GODMAN AAF (KFKT)

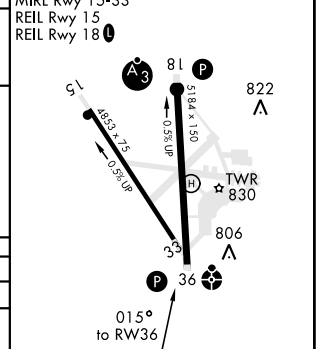
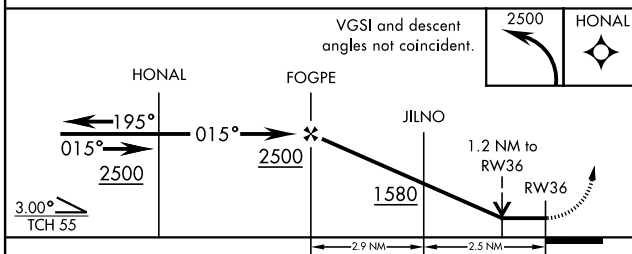
<p>▼ * Circling not authorized E of Rwy 18-36.</p>	<p>ODALS</p>	<p>MISSED APPROACH: Climbing left turn to 2500 direct HONAL and hold.</p>
--	--------------	---

<p>ATIS</p> <p>109.6</p>	<p>LOUISVILLE APP CON</p> <p>132.075 327.0</p>	<p>TOWER ★</p> <p>133.35 (CTAF) 0</p>	<p>GND CON</p> <p>121.9 239.3</p>
---------------------------------	---	--	--



Circling to Rwy 18 at night: Operational VGSI required when train is on the track north and east of Rwy 18 (control tower will advise when train is on track) or when tower is closed. When train is on track or tower is closed remain on or above VGSI glidepath until thld.

ELEV	754	TDZE	740
HIRL Rwy 18-36	0		
MIRL Rwy 15-33			
REIL Rwy 15			
REIL Rwy 18	0		



CATEGORY	A	B	C	D
LNAV MDA	1160-1	419 (500-1)	1160-1½	419 (500-1½)
CIRCLING*	1300-1	545 (600-1)	1300-1½	545 (600-1½)
			1320-2	565 (600-2)

RNAV (GPS) RWY 36

SE-1, 16 JUN 2022 to 14 JUL 2022

SE-1, 16 JUN 2022 to 14 JUL 2022