

VOR/DME RWY 18

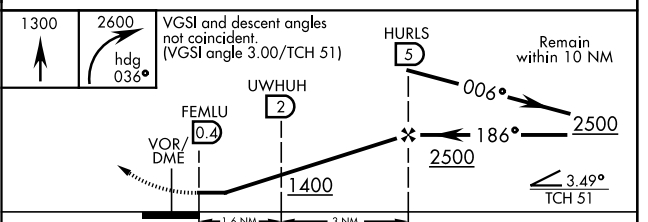
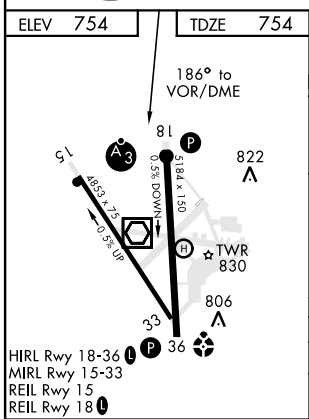
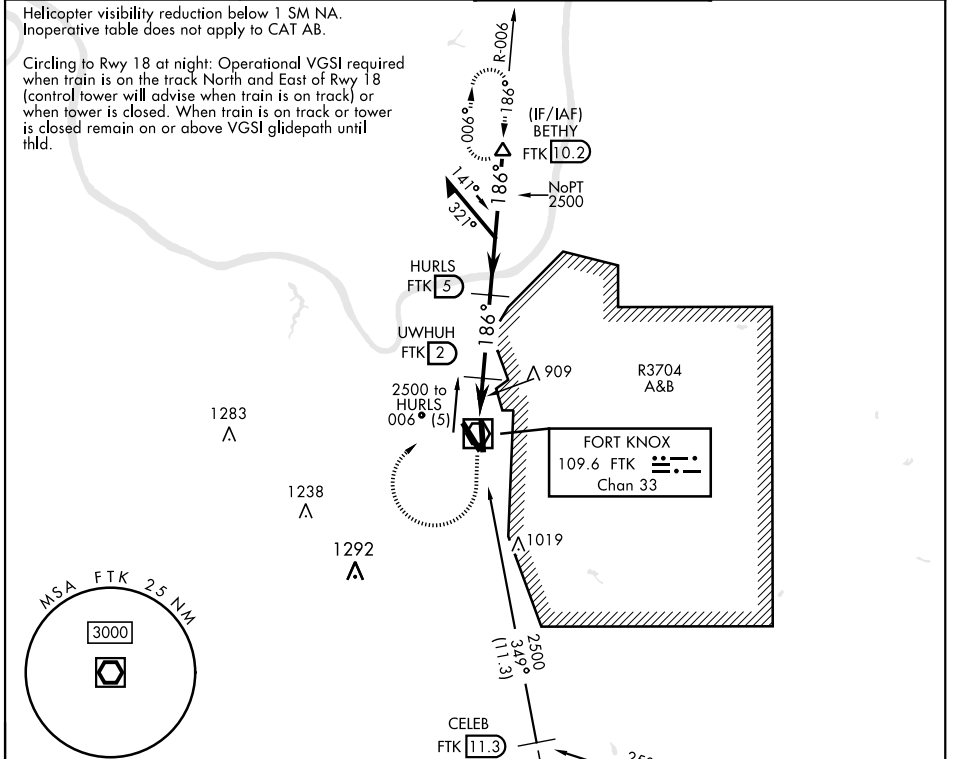
VOR/DME FTK 109.6 Chan 33	APCH CRS 186°	Rwy ldg TDZE 5184 Arprt Elev 754
---	-------------------------	--

AL-151 [USA]

GODMAN AAF (KF TK)

<p>▼ * When ALS inop, increase CAT CD visibility to 1½ mile. ** Circling NA E of Rwy 18-36.</p>	<p>SSALR A3</p>	<p>MISSED APPROACH: Climb to 1300, then climbing right turn to 2600 on heading 036° and FTK VOR/DME R-006 to BETHY INT/FTK 10.2 DME and hold.</p>
---	----------------------------	---

<p>ATIS 109.6</p>	<p>LOUISVILLE APP CON 132.075 327.0</p>	<p>TOWER* 133.35 (CTAF) 0</p>	<p>GND CON 121.9 239.3</p>
------------------------------	--	--	---------------------------------------



CATEGORY	A	B	C	D
S-18 *		1160-1	405 (500-1)	
CIRCLING **	1300-1	545 (600-1)	1300-1½ 545 (600-1½)	1320-2 565 (600-2)

VOR/DME RWY 18

SE-1, 16 JUN 2022 to 14 JUL 2022

SE-1, 16 JUN 2022 to 14 JUL 2022