

WAAS CH 49242 W12A	APP CRS 111°	Rwy Idg TDZE Apt Elev	3212 280 280
--	------------------------	-----------------------------	---

RNAV (GPS) RWY 12

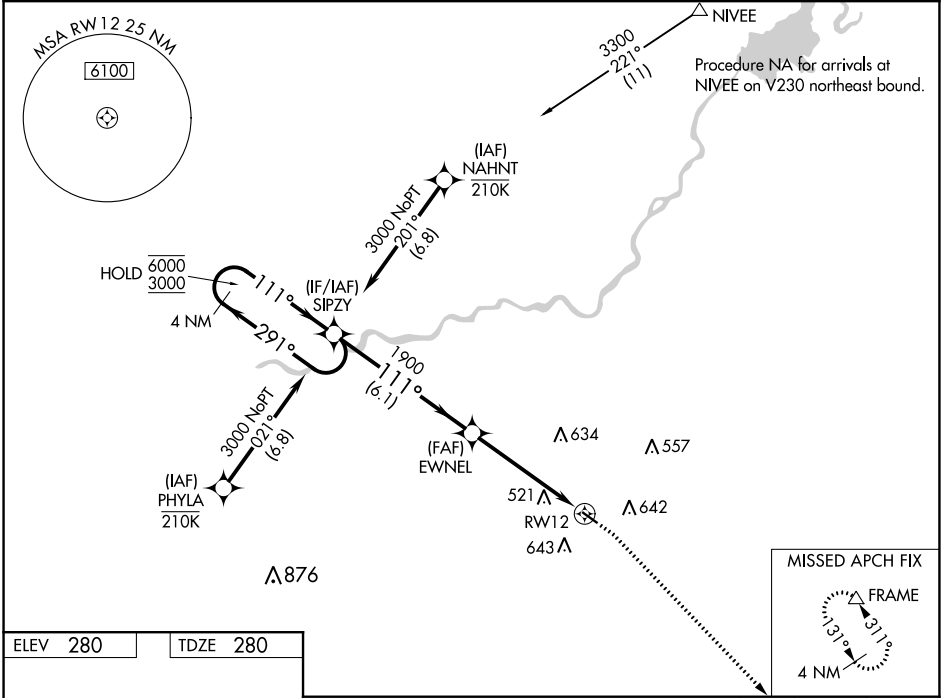
FRESNO CHANDLER EXEC (FCH)

RNP APCH-GPS.

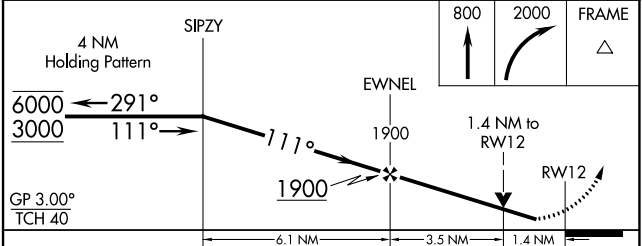
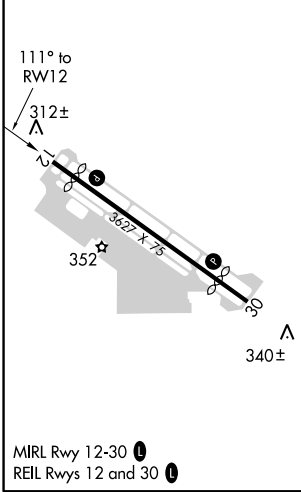
- ▼ Circling Rwy 30 NA at night. Rwy 12 helicopter visibility reduction below 3/4 SM NA.
- ▲ For uncompensated Baro-VNAV systems, LNAV/VNAV NA below -1° C or above 54°C.

MISSED APPROACH: Climb to 800 then climbing right turn to 2000 direct FRAME and hold.

AWOS-3 135.225	FRESNO APP CON 119.0 323.25	CLNC DEL 119.0	UNICOM 123.0 (CTAF) 0
--------------------------	---------------------------------------	--------------------------	---------------------------------



ELEV 280	TDZE 280
----------	----------



CATEGORY	A	B	C	D
LPV DA	530-1 250 (300-1)			NA
LNAV/VNAV DA	809-1½ 529 (600-1½)			NA
LNAV MDA	780-1 500 (500-1)	780-1⅓ 500 (500-1⅓)		NA
C CIRCLING	960-1 680 (700-1)	960-2 680 (700-2)		NA

SW-2, 16 JUN 2022 to 14 JUL 2022

SW-2, 16 JUN 2022 to 14 JUL 2022