

FRESNO, CALIFORNIA

# HI-LOC Z RWY 11L

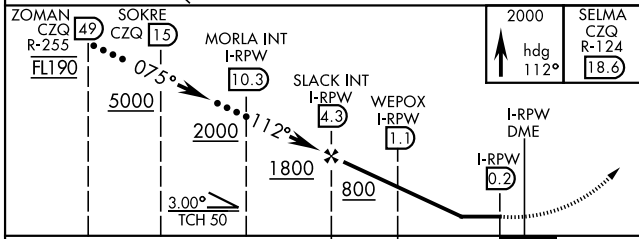
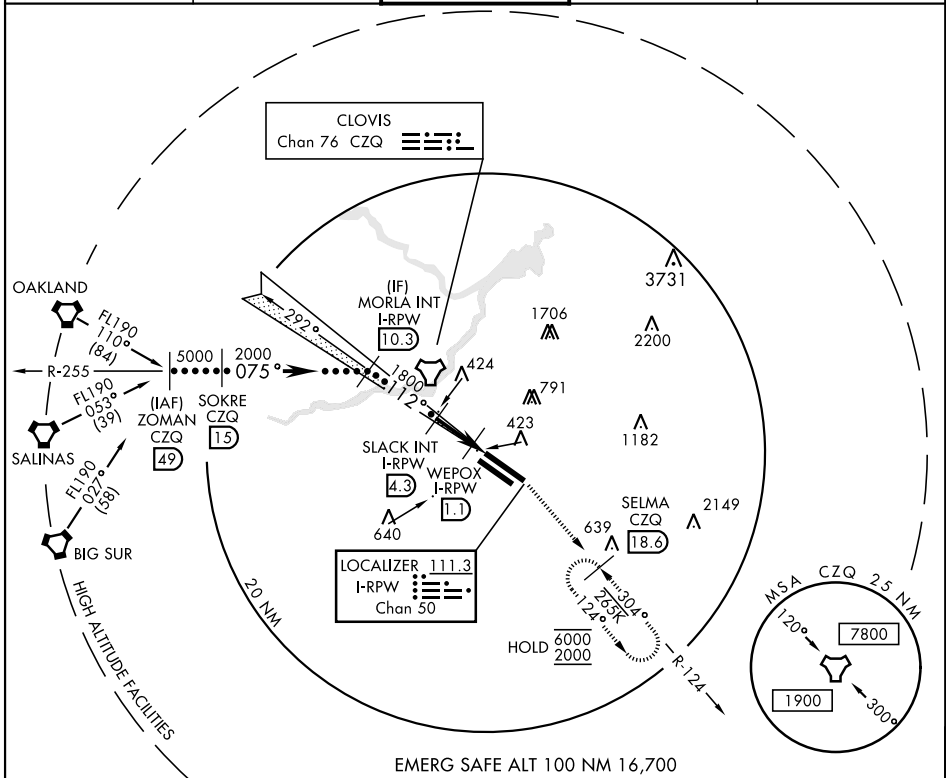
LOC/DME I-RPW <b>111.3</b> Chan <b>50</b>	APCH CRS <b>112°</b>	Rwy Idg 11L <b>9279</b> 11R <b>8008</b> TDZE 11L <b>336</b> 11R <b>333</b> Arprt Elev <b>336</b>
---	-------------------------	---

AL-162 [USAF] FRESNO YOSEMITE INTL (KFAT)

DME required.

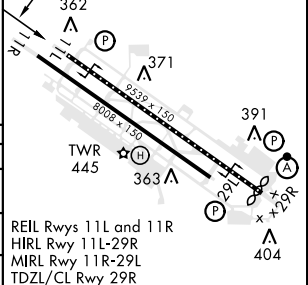
MISSED APPROACH: Climb to 2000 on heading 112° and CZQ TACAN R-124 to SELMA 18.6 DME and hold.

ATIS <b>121.35 273.6</b>	APP CON <b>119.6 351.95</b>	TOWER <b>118.2 251.1</b>	GND CON <b>121.7 348.6</b>	CLNC DEL <b>124.35 348.6</b>
-----------------------------	--------------------------------	-----------------------------	-------------------------------	---------------------------------



ELEV 336	TDZE 11L 336
	TDZE 11R 333

Rwy 11L Idg 9279'  
Rwy 29R Idg 9227'



CATEGORY	C	D	E
S-LOC 11L	680/55	344	(400-1¼)
SIDE STEP RWY 11R	680-1½ 347 (400-1½)	680-2	347 (400-2)
CIRCLING	920-1½ 584 (600-1½)	920-2 584 (600-2)	1140-2¾ 804 (900-2¾)

FRESNO, CALIFORNIA

36°47'N-119°43'W

FRESNO YOSEMITE INTL (KFAT)

Amtd 3 10OCT19

# HI-LOC Z RWY 11L

SW-2, 16 JUN 2022 to 14 JUL 2022

SW-2, 16 JUN 2022 to 14 JUL 2022