

FRESNO, CALIFORNIA

HI-TACAN RWY 11L

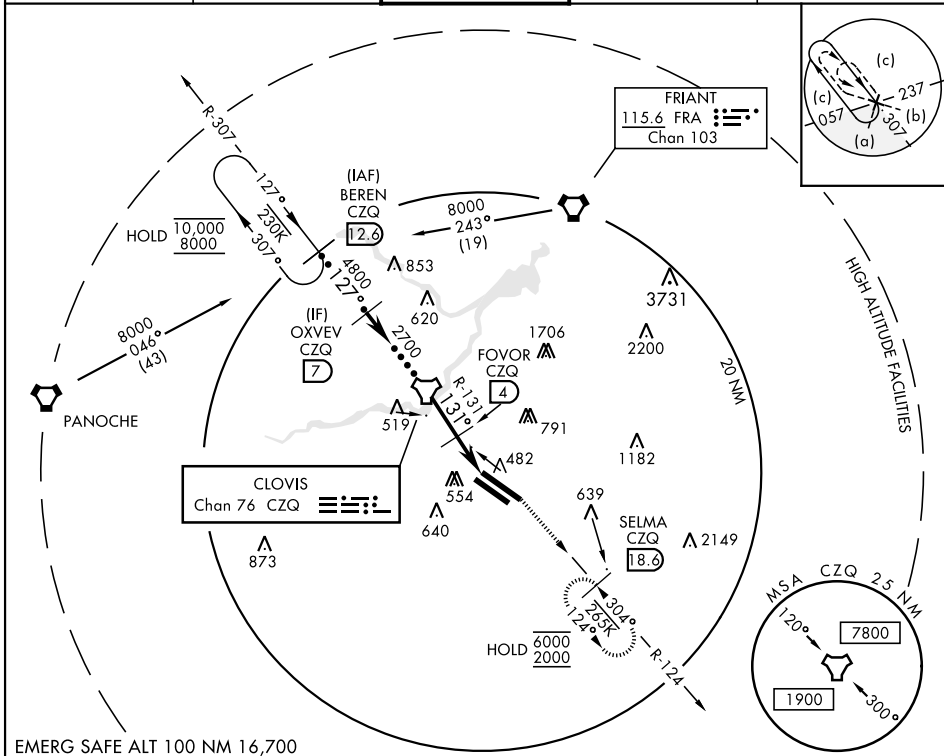
TACAN CZQ Chan 76	APCH CRS 131°	Rwy Idg TDZE Arprt Elev	11L 9279 11L 336 336	11R 8008 11R 333 333
-----------------------------	-------------------------	-------------------------------	---	---

AL-162 [USAF] FRESNO YOSEMITE INTL (KFAT)

DME required.

MISSED APPROACH: Climbing left turn to 2000 on CZQ TACAN R-124 to SELMA / 18.6 DME and hold.

ATIS 121.35 273.6	APP CON 119.6 351.95	TOWER 118.2 251.1	GND CON 121.7 348.6	CLNC DEL 124.35 348.6
-----------------------------	--------------------------------	-----------------------------	-------------------------------	---------------------------------



SW-2, 16 JUN 2022 to 14 JUL 2022

SW-2, 16 JUN 2022 to 14 JUL 2022

EMERG SAFE ALT 100 NM 16,700

BEREN CZQ R-307 12.3	OXVEV	TACAN	FOVOR	SELMA CZQ 18.6	ELEV 336	TDZE 11L 336 TDZE 11R 333
10,000 8000	7	4800	2700	131° 7.3 NM from FAF		Rwy 11L Idg 9279' Rwy 29R Idg 9227'
VGSi and descent angles not coincident (VGSi Angle 3.00/TCH 50)		2000 CZQ R-124				
3.00° TCH 55		1420		362, 371, 391, 404, 445, 480, 539, 550, 554, 584, 620, 639, 640, 660, 791, 853, 873, 1182, 1706, 2149, 2200, 243° (19)		
CATEGORY	C	D	E			
S-11L	800-1½	464	(500-1½)			
SIDESTEP 11R	800-1½ 467 (500-1½)	800-2	467 (500-2)			
CIRCLING	920-1½ 584 (600-1½)	920-2 584 (600-2)	1140-2¾ 804 (900-2¾)			

REIL Rwy 11L and 11R
HIRL Rwy 11L-29R
MIRL Rwy 11R-29L
TDZL/CL Rwy 29R

FRESNO, CALIFORNIA

36° 47' N - 119° 43' W

FRESNO YOSEMITE INTL (KFAT)

Amdt 2A 10OCT19

HI-TACAN RWY 11L