

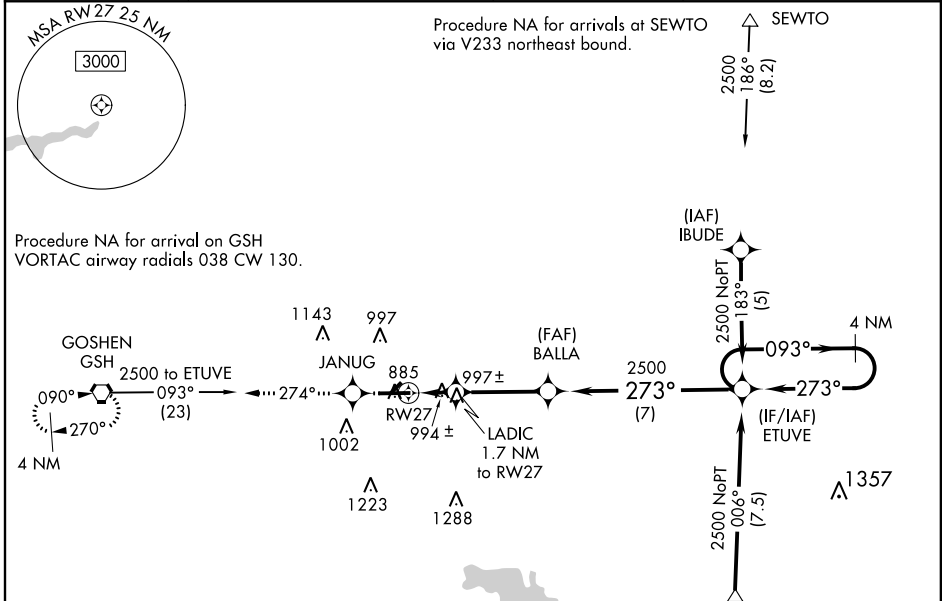
WAAS CH 97606 W27A	APP CRS 273°	Rwy Idg TDZE Apt Elev	6050 827 827
--	------------------------	-----------------------------	---

RNAV (GPS) RWY 27

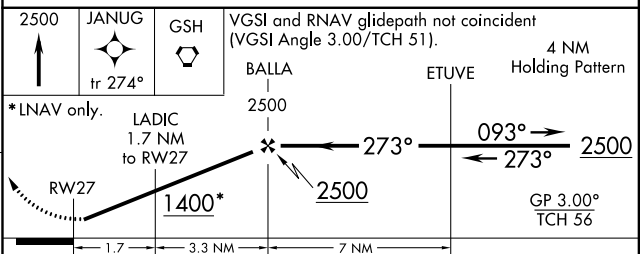
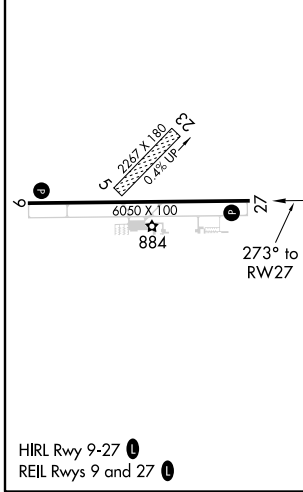
GOSHEN MUNI (GSH)

RNP APCH. Baro-VNAV NA when using Warsaw Muni altimeter setting. For uncompensated Baro-VNAV systems, LNAV/VNAV NA below -16°C or above 47°C. When local altimeter setting not received, use Warsaw altimeter setting: increase LPV DA to 1160 feet, LNAV/VNAV DA to 1347 feet, and all MDAs 40 feet; increase LPV visibility all Cats 1/8 SM, LNAV visibility C/D 1/8 SM and Circling visibility Cat D 1/4 SM. Circling NA to Rwy 5 and 23. Rwy 27 helicopter visibility reduction below 3/4 SM NA.	MISSED APPROACH: Climb to 2500 direct JANUG and on 274° track to GSH VORTAC and hold.
---	---

ASOS 121.45	SOUTH BEND APP CON * 132.05 257.8	CLNC DEL 125.25	UNICOM 123.05 (CTAF) 0
-----------------------	---	---------------------------	----------------------------------



ELEV 827	TDZE 827
----------	----------



CATEGORY	A	B	C	D
LPV DA	1120-1		293 (300-1)	
LNAV/VNAV DA	1307-1 3/4 480 (500-1 3/4)			
LNAV MDA	1260-1	433 (500-1)	1260-1 1/4 433 (500-1 1/4)	1260-1 1/2 433 (500-1 1/2)
CIRCLING	1300-1 473 (500-1)	1320-1 493 (500-1)	1500-2 673 (700-2)	1540-2 1/4 713 (800-2 1/4)

EC-2, 16 JUN 2022 to 14 JUL 2022

EC-2, 16 JUN 2022 to 14 JUL 2022