

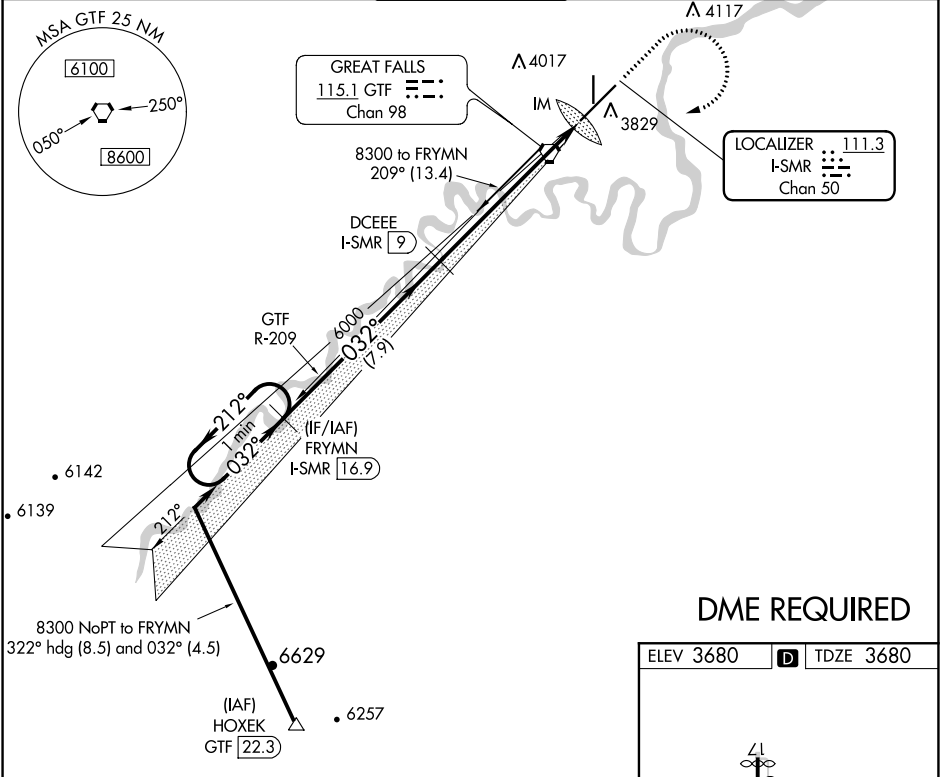
LOC/DME I-SMR 111.3 Chan 50	APP CRS 032°	Rwy Idg 10502 TDZE 3680 Apt Elev 3680
--	------------------------	--

ILS RWY 3 (CAT II & III)

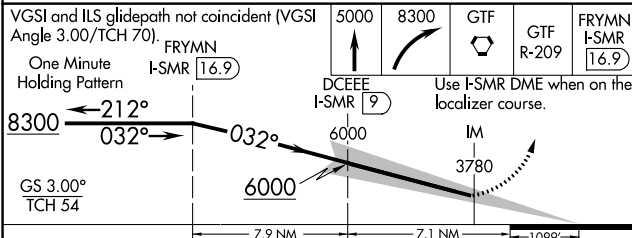
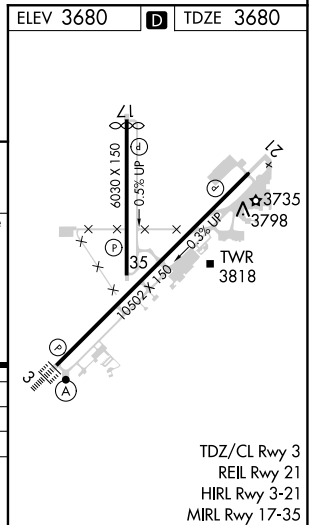
GREAT FALLS INTL (GTF)

⚠ CAT II: RVR 1000 authorized with specific OPSPEC, MSPEC, or LOA approval and use of autoland or HUD to touchdown. DME required.	ALSf-2	MISSED APPROACH: Climb to 5000 then climbing right turn to 8300 direct GTF VORTAC then on GTF VORTAC R-209 to FRYMNI/I-SMR 16.9 DME and hold.
--	--------	---

ATIS 126.6 269.0	GREAT FALLS APP CON 128.6 379.175	GREAT FALLS TOWER 118.7 282.2	GND CON 121.7 348.6	CLNC DEL 121.7 348.6
----------------------------	---	---	-------------------------------	--------------------------------



DME REQUIRED



CATEGORY	A	B	C	D
S-ILS 3	CAT II RA 96/12 100 DA 3780			
S-ILS 3	CAT III RVR 06			

CATEGORY II & III ILS - SPECIAL AIRCREW & AIRCRAFT CERTIFICATION REQUIRED

NW-1, 16 JUN 2022 to 14 JUL 2022

NW-1, 16 JUN 2022 to 14 JUL 2022