

WAAS CH 90221 W21A	APP CRS 212°	Rwy Idg 10502 TDZE 3669 Apt Elev 3680
--	------------------------	--

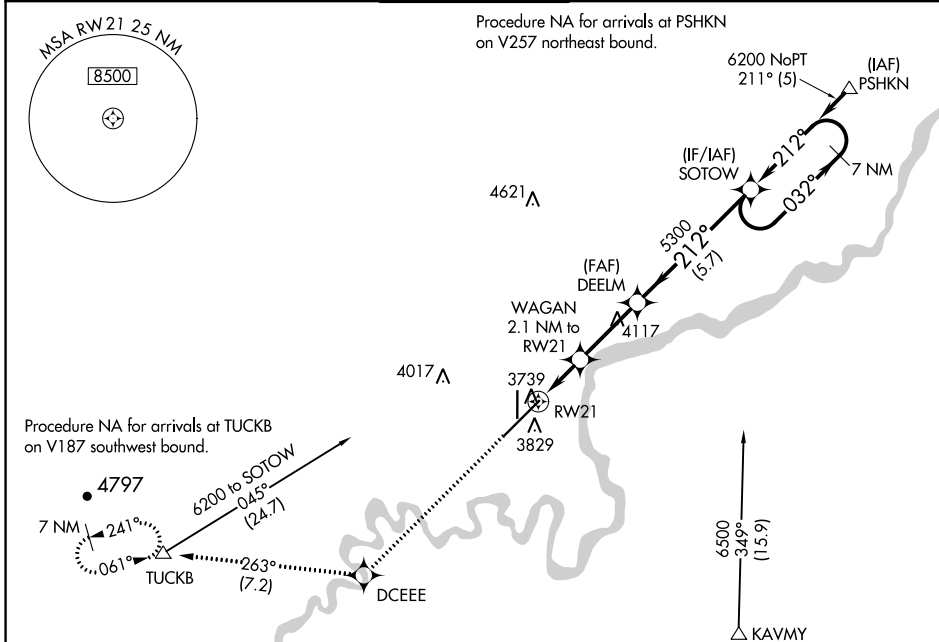
RNAV (GPS) Y RWY 21

GREAT FALLS INTL (GTF)

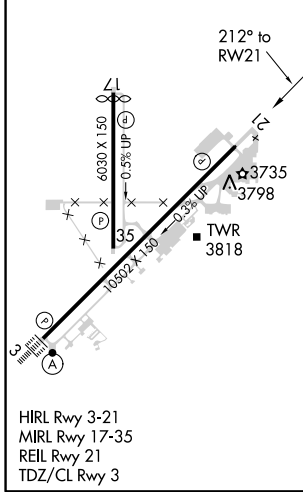
⚠ For uncompensated Baro-VNAV systems, LNAV/VNAV NA below -24°C (-11°F) or above 49°C (121°F). DME/DME RNP-0.3 NA.

MISSED APPROACH: Climb to 8000 direct DCEEE and on track 263° to TUCKB and hold, continue climb-in-hold to 8000.

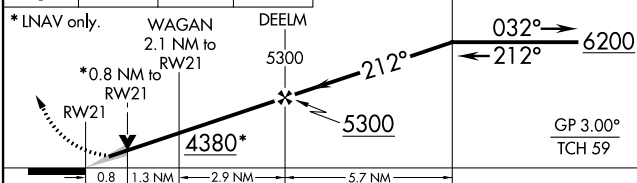
ATIS 126.6 269.0	GREAT FALLS APP CON 128.6 379.175	GREAT FALLS TOWER 118.7 282.2	GND CON 121.7 348.6	CLNC DEL 121.7 348.6
----------------------------	---	---	-------------------------------	--------------------------------



ELEV 3680	D	TDZE 3669
-----------	----------	-----------



8000	DCEEE	tr 263°	TUCKB	VGSI and RNAV glidepath not coincident (VGSI Angle 3.00/TCH 75).
				7 NM Holding Pattern



CATEGORY	A	B	C	D
LPV DA		3869/40	200 (200-3/4)	
LNAV/VNAV DA		3927/45	258 (300-7/8)	
LNAV MDA	4000/55	331 (400-1)	4000/50	331 (400-1)
C CIRCLING	4120-1 440 (500-1)	4140-1 460 (500-1)	4320-1 3/4 640 (700-1 3/4)	4420-2 1/4 740 (600-2 1/4)

NW-1, 16 JUN 2022 to 14 JUL 2022

NW-1, 16 JUN 2022 to 14 JUL 2022