

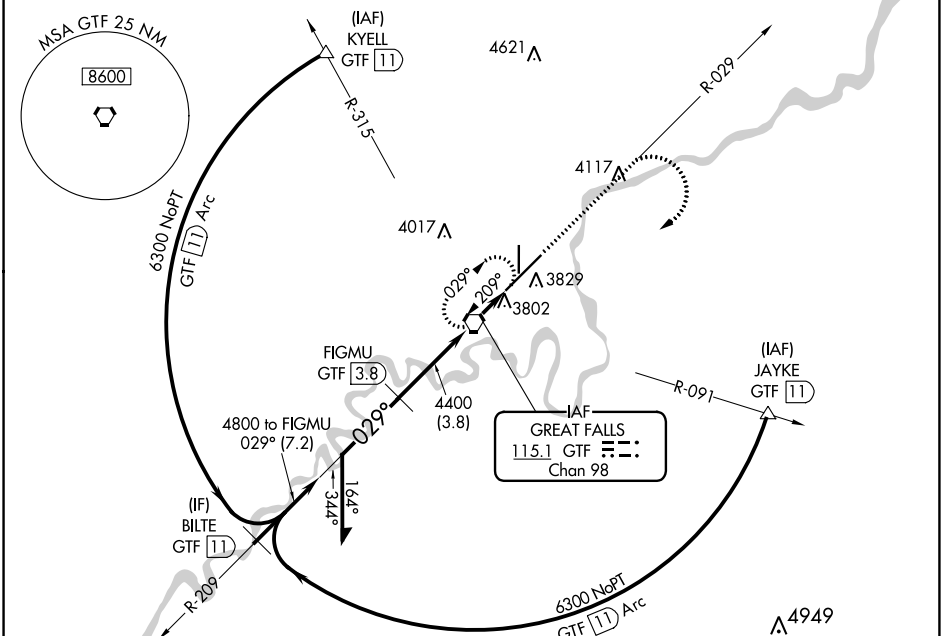
VORTAC GTF 115.1 Chan 98	APP CRS 029°	Rwy Idg 10502 TDZE 3680 Apt Elev 3680
--	------------------------	--

VOR RWY 3

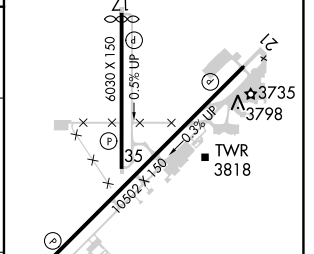
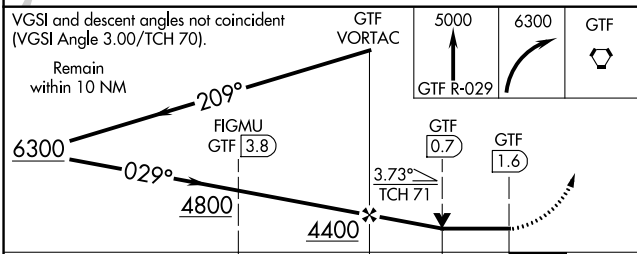
GREAT FALLS INTL (GTF)

DME required. ▼ For inoperative ALS, increase Cat C visibility to RVR 5500.	ALSF-2 ▲	MISSED APPROACH: Climb to 5000 on GTF VORTAC R-029 then climbing right turn to 6300 direct GTF VORTAC and hold, continue climb-in-hold to 6300.
--	-------------	---

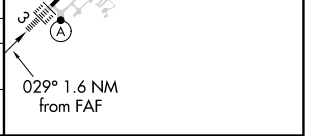
ATIS 126.6 269.0	GREAT FALLS APP CON 128.6 379.175	GREAT FALLS TOWER 118.7 282.2	GND CON 121.7 348.6	CLNC DEL 121.7 348.6
----------------------------	---	---	-------------------------------	--------------------------------



ELEV 3680	TDZE 3680
TDZ/CL Rwy 3 REIL Rwy 21 MIRL Rwy 17-35 HIRL Rwy 3-21	



VGSI and descent angles not coincident (VGSI Angle 3.00/TCH 70). Remain within 10 NM	GTF VORTAC	5000	6300	GTF
		GTF R-029		
	FIGMU GTF 3.8	GTF 0.7	GTF 1.6	
	3.8 NM	0.7	1 NM	
CATEGORY	A	B	C	D
S-3	4060/24 380 (400-½)			NA
CIRCLING	4140-1	460 (500-1)	4320-1¼ 640 (700-1¼)	NA



NW-1, 16 JUN 2022 to 14 JUL 2022

NW-1, 16 JUN 2022 to 14 JUL 2022