

LOC/DME I-DB	APP CRS	Rwy Idg TDZE	9000
109.55	234°	855	
Chan 32 (Y)		Apt Elev	926

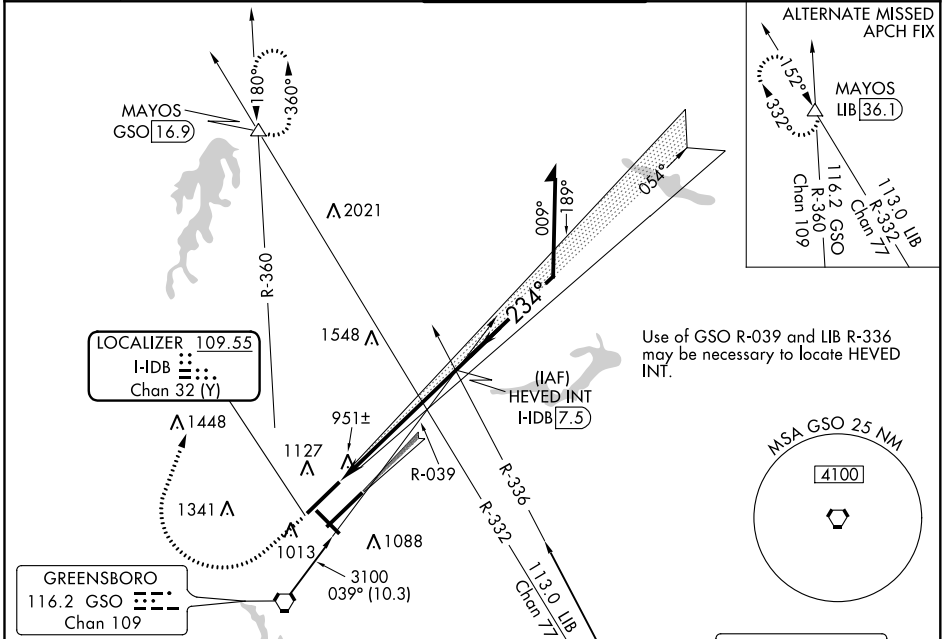
ILS or LOC RWY 23R

PIEDMONT TRIAD INTL (GSO)

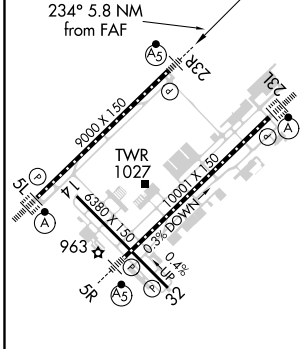
Simultaneous approach authorized with Rwy 23L.

MALSR MISSED APPROACH: Climb to 1500 then climbing right turn to 3100 on heading 015° and GSO VORTAC R-360 to MAYOS INT/GSO 16.9 DME and hold.

D-ATIS	GREENSBORO APP CON (250°-049°) (050°-249°)	GREENSBORO TOWER	GND CON	CLNC DEL
128.55	124.35 269.225 126.6 327.075	119.1 290.325	121.9 348.6	121.75



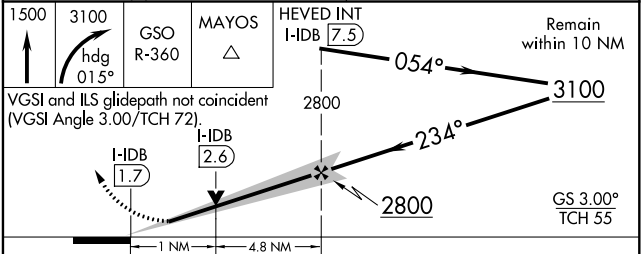
ELEV 926	D	TDZE 855
----------	---	----------



TDZ/CL Rws 5L, 23R and 23L
REL Rwy 32
HIRL Rws 14-32, 5R-23L and 5L-23R

FAF to MAP 5.8 NM

Knots	60	90	120	150	180
Min:Sec	5:48	3:52	2:54	2:19	1:56



CATEGORY	A	B	C	D
S-ILS 23R	1055/18		200 (200-1/2)	
S-LOC 23R	1240/24		385 (400-1/2) 1240/40 385 (400-3/4)	
CIRCLING	1440-1 514 (600-1)		1700-2 1/4 774 (800-2 1/4) 1700-2 1/2 774 (800-2 1/2)	

SE-2, 16 JUN 2022 to 14 JUL 2022

SE-2, 16 JUN 2022 to 14 JUL 2022