

LOC/DME I-LLG 109.55 Chan 32 (Y)	APP CRS 054°	Rwy Idg TDZE 916 Apt Elev 926	9000
--	------------------------	---	-------------

ILS or LOC RWY 5L

PIEDMONT TRIAD INTL (GSO)

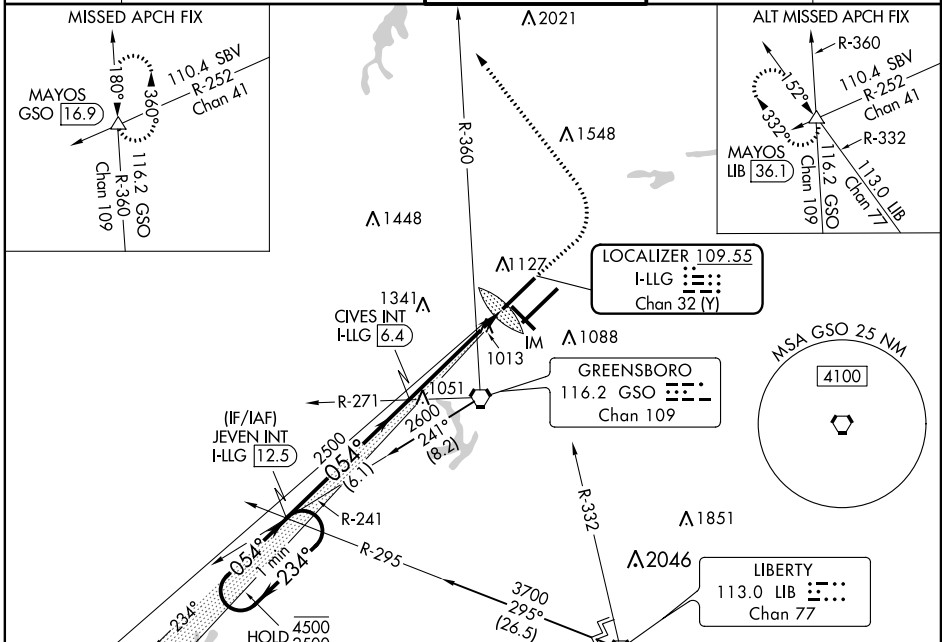
DME or RADAR required for procedure entry at LIB VORTAC.

ALSF-2

MISSED APPROACH: Climb to 1400 then climbing left turn to 3100 on heading 330° and GSO VORTAC R-360 to MAYOS INT/GSO 16.9 DME and hold.

Simultaneous approach authorized with Rwy 5R. For inop ALS, increase S-LOC 5L Cat C/D visibility to RVR 5500.

D-ATIS 128.55	GREENSBORO APP CON 124.35 269.225 126.6 327.075 (250°-049°) (050°-249°)	GREENSBORO TOWER 119.1 290.325	GND CON 121.9 348.6	CLNC DEL 121.75
-------------------------	--	--	-------------------------------	---------------------------



One Minute Holding Pattern

VEVSI and ILS glidepath not coincident (VGS Angle 3.00/TCH 69).

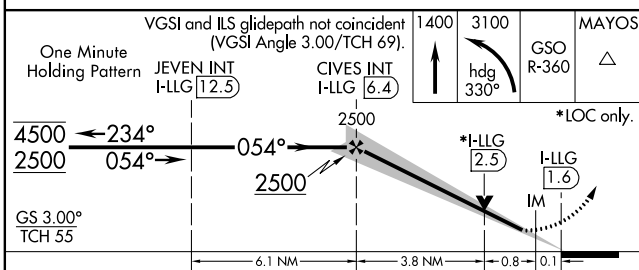
JEVEN INT I-LLG 12.5

CIVES INT I-LLG 6.4

1400 3100 GSO MAYOS

hdg 330° R-360

*LOC only.

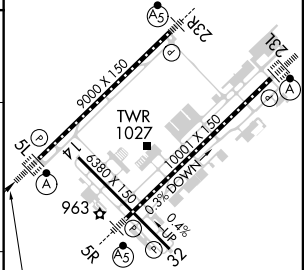


ELEV 926 TDZE 916

TDZ/CL Rws 5L, 23R and 23L

REIL Rwy 32

HIRL Rws 14-32, 5R-23L and 5L-23R



CATEGORY	A	B	C	D
S-ILS 5L	1116/18		200 (200-½)	
S-LOC 5L	1280/24	364 (400-½)	1280/35 364 (400-¾)	1280/40 364 (400-¾)
CIRCLING	1440-1	514 (600-1)	1700-2¼ 774 (800-2¼)	1700-2½ 774 (800-2½)

FAF to MAP 4.7 NM					
Knots	60	90	120	150	180
Min:Sec	4:42	3:08	2:21	1:53	1:34

SE-2, 16 JUN 2022 to 14 JUL 2022

SE-2, 16 JUN 2022 to 14 JUL 2022