

LOC/DME I-GFN <b>111.15</b> Chan 48 (Y)	APP CRS <b>325°</b>	Rwy Idg 6380 TDZE 902 Apt Elev 926
---	------------------------	---

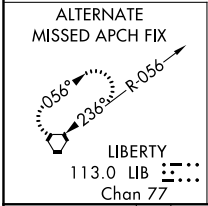
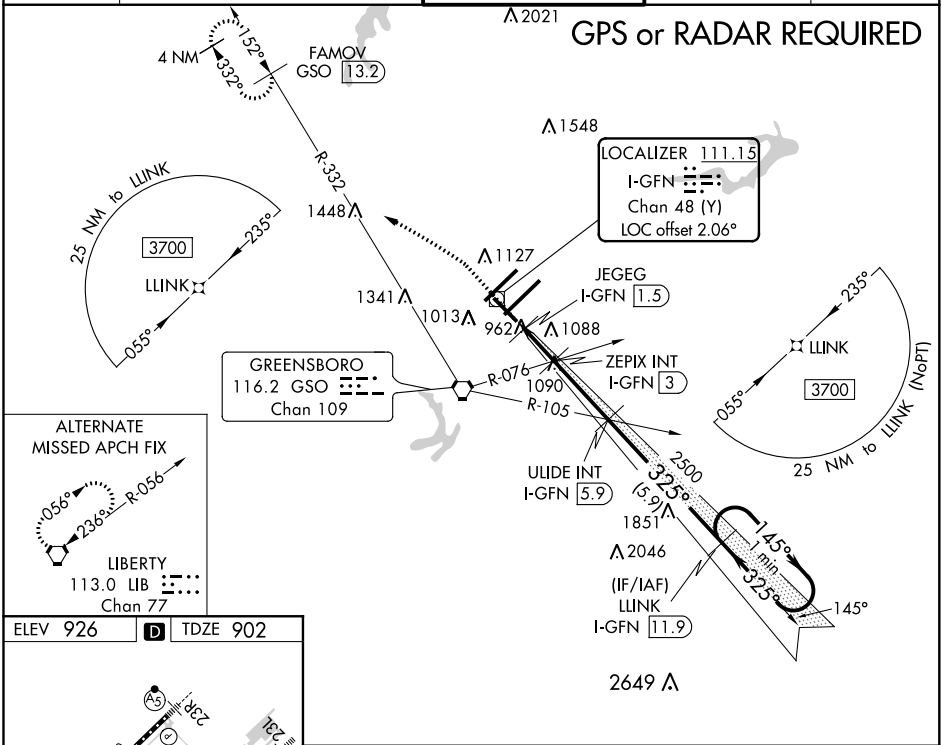
# ILS Y or LOC/DME Y RWY 32

PIEDMONT TRIAD INTL (GSO)

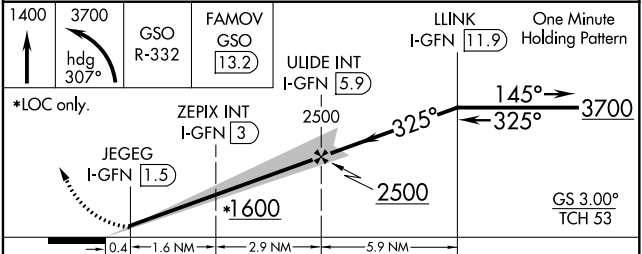
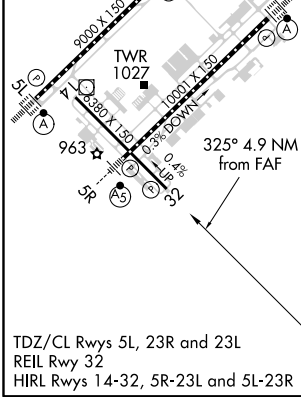
**⚠** DME required. When local altimeter setting is not received use Smith Reynolds altimeter setting and increase DA to 1188 feet, all MDA 40 feet, increase S-ILS 32 all Cats visibility 1/8 mile and S-LOC 32 Cats C/D 1/8 mile, and Circling Cats C/D 1/4 mile.

**MISSED APPROACH:** Climb to 1400 then climbing left turn to 3700 on heading 307° and GSO VORTAC R-332 to FAMOV/GSO 13.2 DME and hold.

D-ATIS <b>128.55</b>	GREENSBORO APP CON <b>124.35 269.225</b> (250°-049°) <b>126.6 327.075</b> (050°-249°)	GREENSBORO TOWER <b>119.1 290.325</b>	GND CON <b>121.9 348.6</b>	CLNC DEL <b>121.75</b>
-------------------------	---	--	-------------------------------	---------------------------



ELEV 926	<b>D</b>	TDZE 902
----------	----------	----------



CATEGORY	A	B	C	D
S-ILS 32		1152-3/4	250 (300-3/4)	
S-LOC 32	1220-1	318 (400-1)	1220-7/8	318 (400-7/8)
<b>C</b> CIRCLING	1440-1	514 (600-1)	1700-2 1/4 774 (800-2 1/4)	1700-2 1/2 774 (800-2 1/2)

SE-2, 16 JUN 2022 to 14 JUL 2022

SE-2, 16 JUN 2022 to 14 JUL 2022