

WAAS CH 86515 W05B	APP CRS 054°	Rwy Idg 9000 TDZE 916 Apt Elev 926
--	------------------------	---

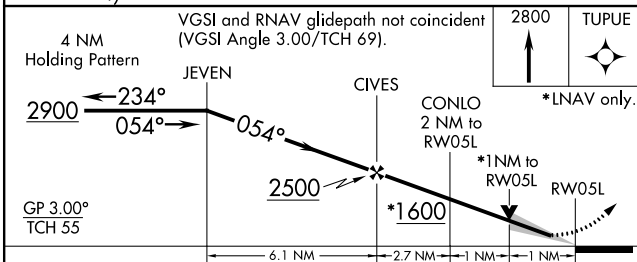
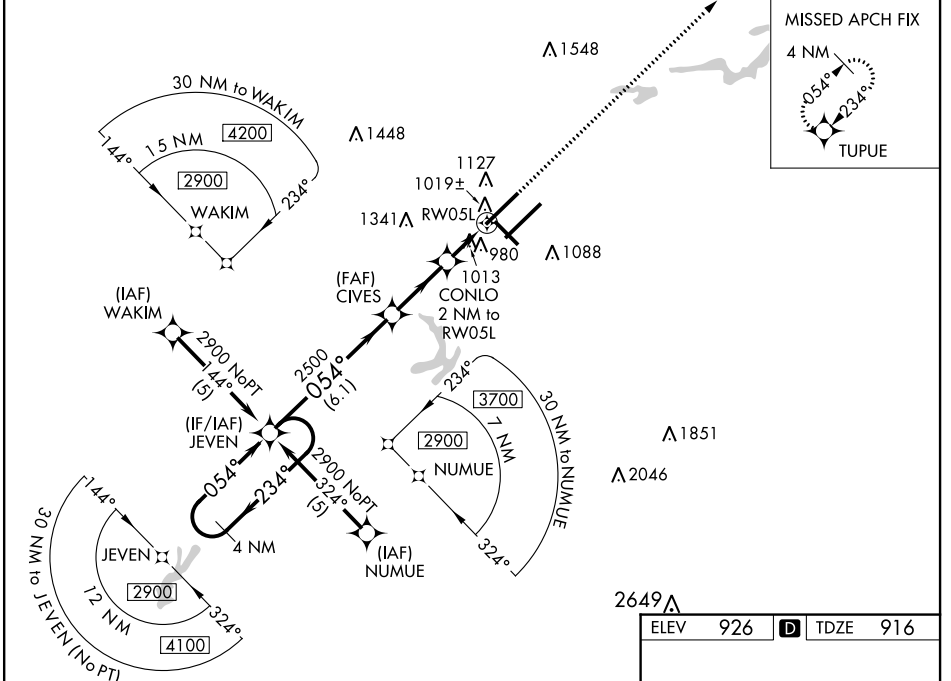
RNAV (GPS) RWY 5L

PIEDMONT TRIAD INTL (GSO)

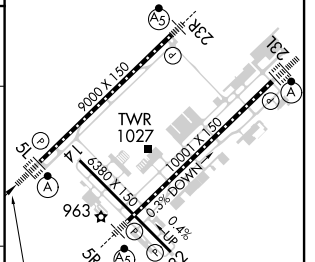
⚠ For inop ALSF, increase LNAV Cat D visibility to RVR 6000. For uncompensated Baro-VNAV systems, LNAV/VNAV NA below -16°C (4°F) or above 47°C (116°F).
⚠ DME/DME RNP-0.3 NA. Simultaneous approach authorized with ILS or LOC Rwy 5R, ILS Rwy 5R (CAT II). Use of FD or AP providing RNAV track guidance required during simultaneous operations. LNAV procedure NA during simultaneous operations.

ALSF-2
A MISSED APPROACH: Climb to 2800 direct TUPUE and hold.

D-ATIS 128.55	GREENSBORO APP CON 124.35 269.225 (250°-049°) 126.6 327.075 (050°-249°)	GREENSBORO TOWER 119.1 290.325	GND CON 121.9 348.6	CLNC DEL 121.75
-------------------------	---	--	-------------------------------	---------------------------



ELEV 926	D TDZE 916
----------	-------------------



CATEGORY	A	B	C	D
LPV DA	1116/18		200 (200-½)	
LNAV/VNAV DA	1367/50		451 (500-1)	
LNAV MDA	1300/24 384 (400-½)		1300/50 384 (400-1)	
C CIRCLING	1440-1 514 (600-1)		1700-2¼ 774 (800-2¼)	
			1700-2½ 774 (800-2½)	

054° to RW05L
 TDZ/CL Rwy 5L, 23R and 23L
 REIL Rwy 32
 HIRL Rwy 14-32, 5R-23L and 5L-23R

SE-2, 16 JUN 2022 to 14 JUL 2022

SE-2, 16 JUN 2022 to 14 JUL 2022